

REFERENCE BOOK



CESCO

**Advanced Solutions
for Grain Handling,
Storing and Processing.**

*Last updated: January 2025



CESCO EPC GmbH, is an internationally operating German company based in Konstanz, specialized in the design and supply of industrial plants for grain logistics and deep processing, including handling, storing, and milling systems.

The products and services provided by CESCO are primarily grouped into four distinct business areas:



**Inland Grain
Terminals**



**Port Grain
Terminals**



**Steel Structures
for Milling Plants**



**Turnkey
Plants**

CESCO is currently developing global projects and facilities in more than 20 countries, highlighting among others, the following areas of influence: **Europe, Ukraine, Kazakhstan, Middle East, Far East and Africa.**

We offer our clients personalized, professional solutions with technology and quality guaranteed and backed by decades of experience in executing projects all over the world. Our lean structure, our flexible and dynamic processes as well as efficient tools enable us to meet the expectations of our customers and employees.

CESCO covers all key project phases, including design, procurement, shipping & customs, erection, and commissioning, with a particular focus on understanding customer needs from the project's beginning.

The company's engineering and management offices are located in Germany, and they closely collaborate with sales and procurement teams in Italy, along with production facilities in both Germany and northern Italy.

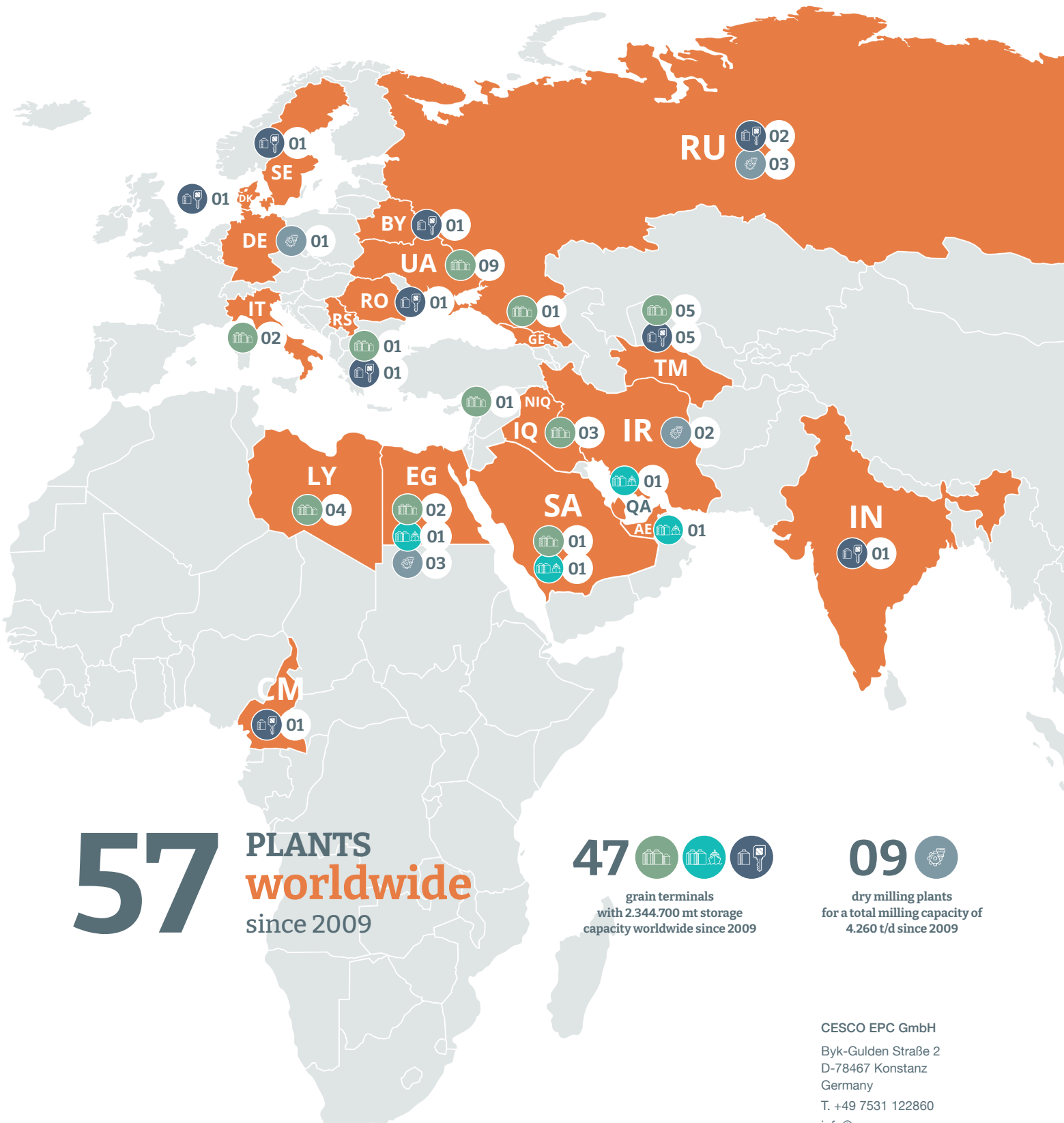
CESCO has an extensive international experience in large project management with a complete portfolio for Handling Storing and Processing of Grain, including the technological know-how in dry milling. Always faithful to our value proposal, "Smart Concept, Easy Operation", **CESCO** is a reliable partner for investors.

- ▶ **Smart concepts of tailor-made plants for the customer's benefit**
- ▶ **Internal basic and fine engineering including structural design of steel structures**
- ▶ **Industrial design of manufacturing process**
- ▶ **Special attention to the operational efficiency and energy saving**
- ▶ **German Engineering, made in Europe**
- ▶ **Family business, short hierarchies, quick decisions, strong commitment**

CESCO EPC GmbH
Byk-Gulden Straße 2
D-78467 Konstanz
Germany
T. +49 7531 122860
info@cesco-group.com

www.cesco-group.com





57 PLANTS **worldwide** since 2009

47 
 grain terminals
 with 2.344.700 mt storage
 capacity worldwide since 2009

09 
 dry milling plants
 for a total milling capacity of
 4.260 t/d since 2009

CESCO EPC GmbH
 Byk-Gulden Straße 2
 D-78467 Konstanz
 Germany
 T. +49 7531 122860
 info@cesco-group.com

www.cesco-group.com





CESCO EPC GmbH
Byk-Gulden Straße 2
D-78467 Konstanz
Germany
T. +49 7531 122860
info@cesco-group.com

www.cesco-group.com



Inland Grain Terminals



References by countries

Egypt (EG)

GRAIN STORAGE FOR FLOUR MILL

2015 6.000 mt AOI Engine Factory

GRAIN STORAGE TERMINAL

2024 100.000 mt Argynza / Egypt Future

Georgia (GE)

TRAIN TERMINAL

2023 30.000 mt Grain Terminal LCC

Iraq (IQ)

GRAIN STORAGE TERMINALS

2015 50.000 mt State Company - Hilla

2015 50.000 mt State Company - Kirkuk

2015 50.000 mt State Company - Babyl

Italy (IT)

SOYA BEAN CLEANING, DRYING AND STORAGE

2019 2.700 mt La Sanfermese Spa

SILO STORAGE SECTION FOR A MILL PLANT WITH MIXED TRAIN AND TRUCK INTAKE SECTION, ROUND HOPPER BOTTOM SILOS AND TRUCK OUTLOADING SILOS

2025 Molino Chiavazza

Lybia (LY)

GRAIN STORAGE TERMINAL (WHEAT)

2015 16.000 mt Al Sahal Group - Tripoli

2023 10.000 mt Al Sahal Group – A1 Benghazi

2023 10.000 mt Al Sahal Group – A2 Benghazi

2023 10.000 mt Al Sahal Group – A3 Benghazi

North Iraq Kurdistan (NIQ)

GRAIN STORAGE TERMINAL

2017 40.000 mt Hiwa for Investment

Mexico (MX)

GRAIN STORAGE TERMINAL

2024 70.000 mt Almacenadora Almer

Saudi Arabia (SA)

GRAIN STORAGE TERMINAL (CORN)

2020 20.000 mt Al Masirah

Serbia (RS)

GRAIN STORAGE TERMINAL

2011 20.000 mt Brotherhood & Unity

Turkmenistan (TM)

GRAIN STORAGE TERMINALS

2011 100.000 mt Turkmen- gallaonumleri

2011 50.000 mt Turkmen- gallaonumleri

2011 100.000 mt Turkmen- gallaonumleri

2011 50.000 mt Turkmen- gallaonumleri

2011 50.000 mt Turkmen- gallaonumleri

Ukraine (UA)

GRAIN STORAGE TERMINALS

2012 105.000 mt MHP Mironovka - Jampol

2012 95.000 mt Mironovka - Andrjaschewks

2016 50.000 mt UkranLand Farming

2018 120.000 mt Convex/EPICENTER K

2018 120.000 mt Convex/EPICENTER K

2022 60.000 mt Convex/EPICENTER K

2022 20.000 mt Convex/EPICENTER K

2022 120.000 mt Convex/EPICENTER K

2022 70.000 mt Convex/EPICENTER K



CESCO EPC GmbH

Byk-Gulden Straße 2

D-78467 Konstanz

Germany

T. +49 7531 122860

info@cesco-group.com

www.cesco-group.com





AOI Engine Factory Egypt

Inland Grain Terminal
Product: wheat
Storage capacity: 6.000 t



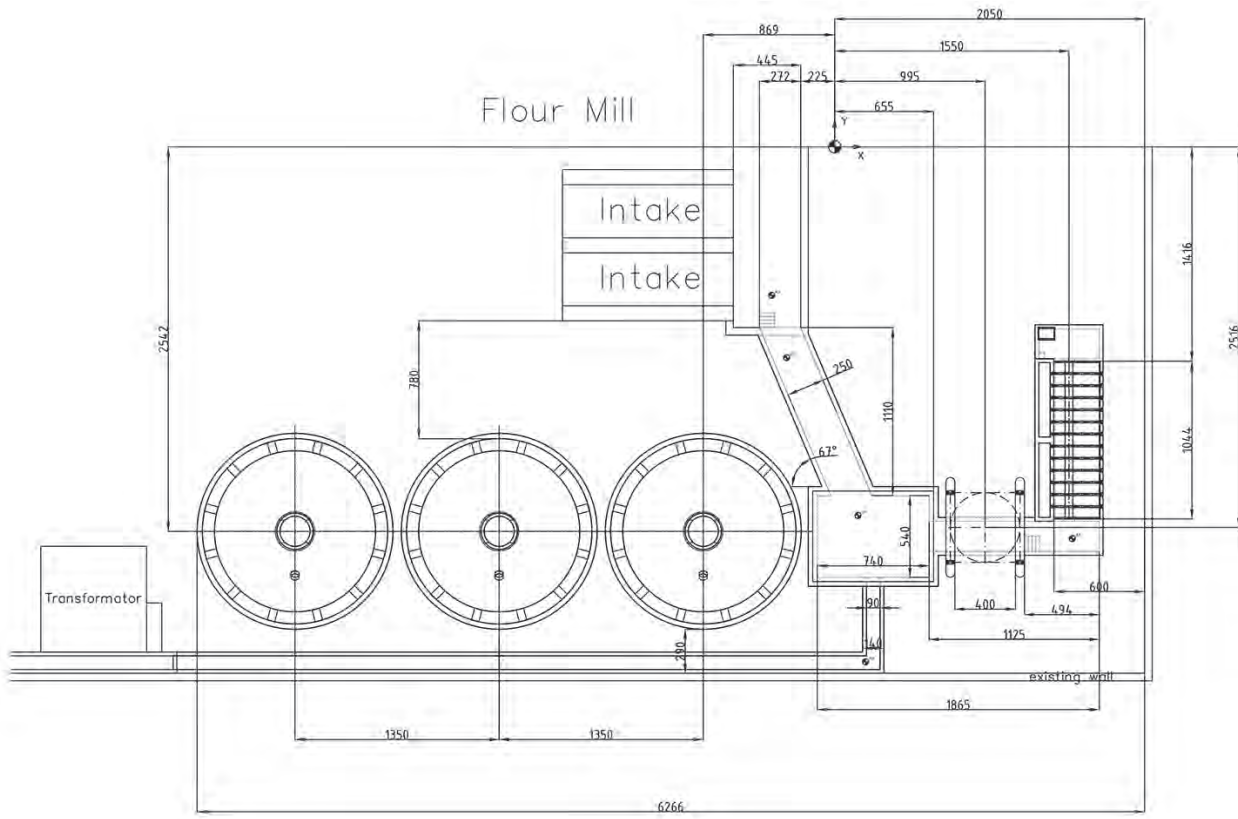
Detailed engineering, production, supply and installation of a Grain Storage Silo.



CESCO EPC GmbH
Byk-Gulden Straße 2
D-78467 Konstanz
Germany
T. +49 7531 122860
info@cesco-group.com

www.cesco-group.com





Products

Conveyors

- Truck Intake
- Intake aspiration and filter
- Chain Conveyors
- Bucket Belt Elevators BE280

Silos

- Hopper bottom silos FBS 11,50/17
- Train/Truck Loading Silos TLS 4,60/05/45
- Aeration System
- Truck Outloading

Process equipment

- Cleaner
- Temperature Control System
- Magnetic Separator

Steel structures

- Conveyor Bridges
- Open/Closed Walkway
- Platform and Ladders

Technical data

Type	Inland Grain Terminal
Country	Egypt
City	-
Customer	AOI Engine Factory
Product	wheat
Storage capacity t	6.000
Silo type	Steel with Concrete Hopper
Conveying capacity t/h	100
Milling capacity t/d	-
Year begin	2014
Year end	2015

Services

Basic and detail engineering and design of the general layout and flow-chart of the whole plant.

Design of architectural drawing for the civil works calculation and realization.

Steel structures design and static calculation.

Delivery and supervision of installation.

Electrical design, delivery and supervision of erection of the central control and automation cabinet and the on-site electrical material.

Commissioning.

Training.



Argynza / Egypt Future Egypt

Inland Grain Terminal
Product: wheat
Storage capacity: 100.000 t

Strategic Silo Grain Terminal



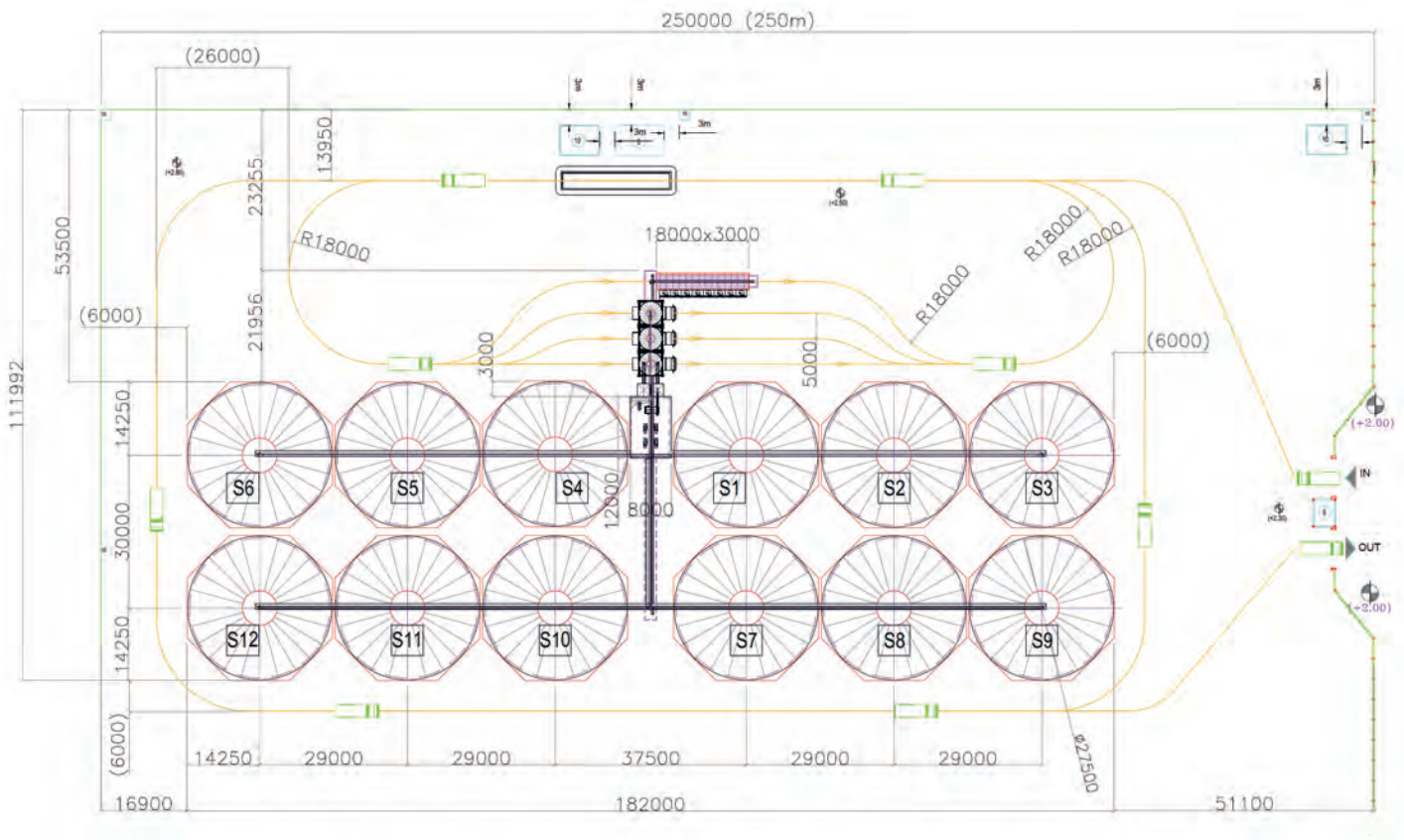
Project VIDEO



www.cesco-group.com

CESCO EPC GmbH
Byk-Gulden Straße 2
D-78467 Konstanz
Germany
T. +49 7531 122860
info@cesco-group.com





Products

Conveyors

- Truck Intake
- Intake aspiration and filter
- Chain Conveyors CC420
- Bucket Belt Elevators BBE180, 370

Silos

- Flat Bottom Silos FBS 27,50/14
- Train/Truck Loading Silos TLS-S 4,60/06/45
- Buffer Bins
- Aeration System
- Sweep Augers
- Truck Outloading

Process equipment

- Cleaner
- Temperature Control System

Steel structures

- Conveyor Bridges
- Open/Closed Walkway
- Platform and Ladders
- Solid Frames
- Machinery Towers

Technical data

Type	Inland Grain Terminal
Country	Egypt
City	New Cairo
Customer	Argynza / Egypt Future
Product	wheat
Storage capacity t	100.000
Silo type	Steel
Conveying capacity t/h	200
Milling capacity t/d	-
Year begin	2024
Year end	2025

Services

Basic and detail engineering and design of the general layout and flow-chart of the whole plant.

Design of architectural drawing for the civil works calculation and realization.

Steel structures design and static calculation.

Delivery and supervision of installation.

Electrical design, delivery and supervision of erection of the central control and automation cabinet and the on-site electrical material.

Commissioning.

Training.



Grain Terminal LCC Georgia

Inland Grain Terminal
Product: Wheat
Storage capacity: 30.000 t



Train Grain Terminal, Grain Terminal LCC

The Train Terminal LCC features 10 cylindrical flat-bottom steel silos of various sizes, offering a total storage capacity of 30,000 tons for rail-to-truck transshipment and wheat storage. Grain intake is handled by two 16x2.5 m pits, equipped with chain conveyors, dust aspiration systems, and magnetic pipes to remove metal contaminants, providing an intake capacity of 2x200 t/h. Grain is transferred via bucket elevators to the silos, truck loading system, or bagging line.

The reclaiming and recycling lines operate at 2x300 t/h, distributing grain to loading silos or the bagging line, which is equipped with independent weighing scales. Additional systems include silo ventilation, temperature and level monitoring, compressed air systems, air filters, and control systems. Both grain receiving and loading lines can operate simultaneously.

Project VIDEO

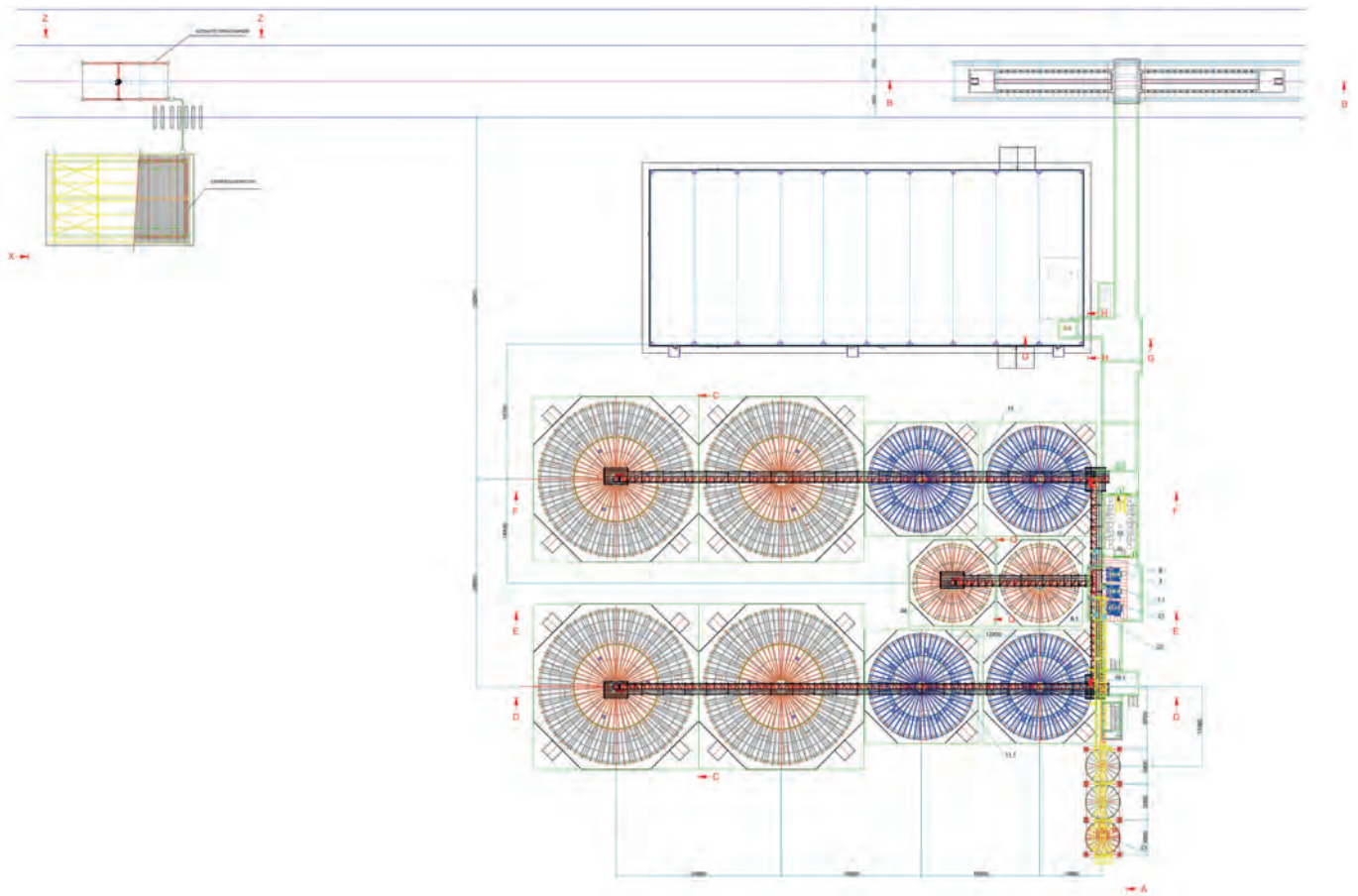


CESCO EPC GmbH
 Byk-Gulden Straße 2
 D-78467 Konstanz
 Germany
 T. +49 7531 122860
 info@cesco-group.com



www.cesco-group.com





Products

Conveyors

- Train Intake
- Intake Aspiration and Filter
- Chain Conveyors TKF300, TKF400, TKF520
- Bucket Belt Elevators BE280, BE370, BE660

Silos

- Flat Bottom Silos FBS 14,50/16, FBS 21,40/14, FBS 10,7/11
- Hopper Bottom Silos HBS 4,60/12/T45
- Buffer Bins
- Aeration System
- Sweep Augers
- Truck Outloading

Process equipment

- Temperature Control System
- Spot Filter
- Magnetic Separator

Steel structures

- Conveyor Bridges
- Platforms and Ladders
- Machinery Towers

Technical data

Type	Inland Grain Terminal
Country	Georgia
City	Astara
Customer	Grain Terminal LCC
Product	Wheat
Storage capacity t	30.000
Silo type	Steel
Conveying capacity t/h	400
Milling capacity t/d	-
Year begin	2020
Year end	2023

Services

Basic and detail engineering and design of the general layout and flow-chart of the whole plant.

Design of architectural drawing for the civil works calculation and realization.

Steel structures design and static calculation.

Delivery and supervision of installation.

Electrical design, delivery and supervision of erection of the central control and automation cabinet and the on-site electrical materia.

Commissioning.

Training.



La Sanfermese spa Italy

Inland Grain Terminal
Product: Soya bean
Storage capacity: 2.700 t

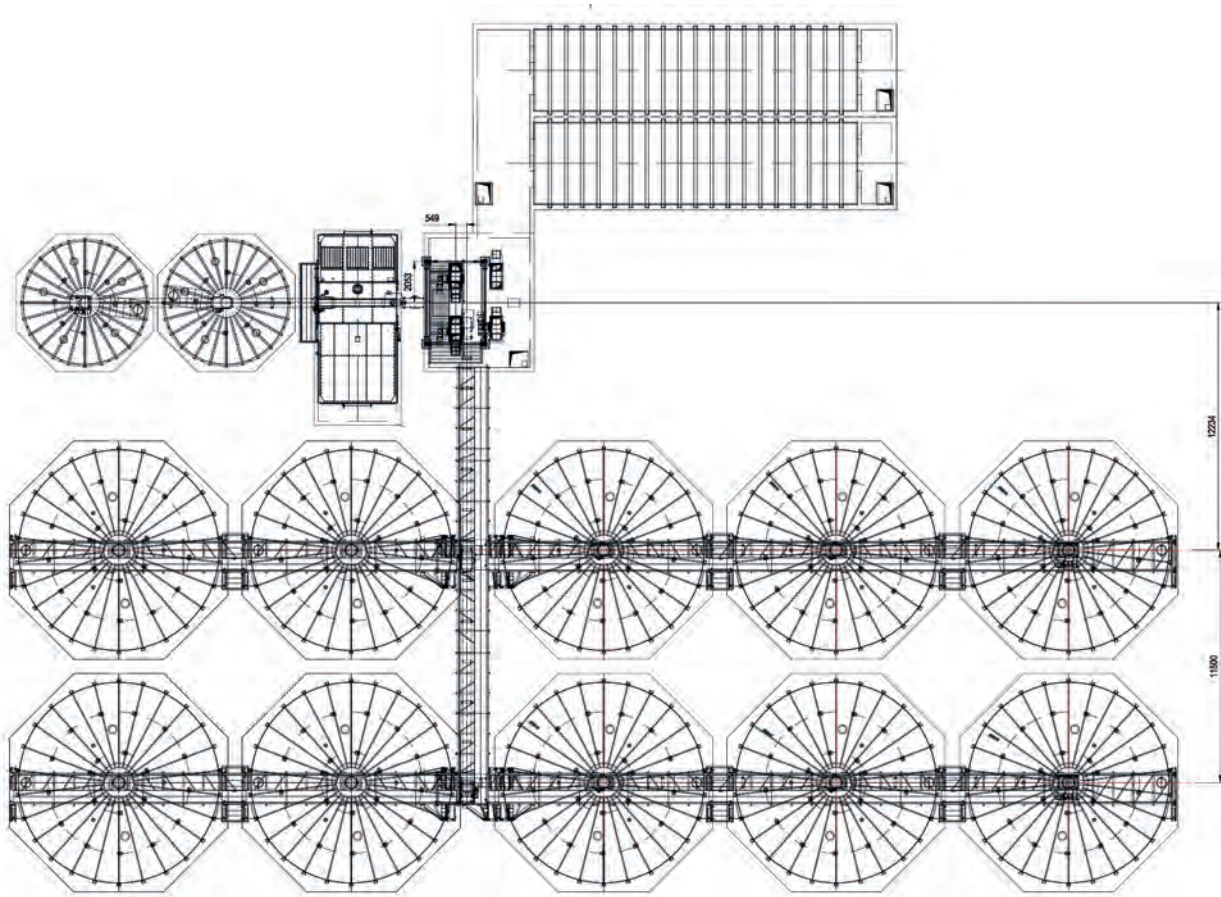
Soya bean cleaning, drying and storage



www.cesco-group.com

CESCO EPC GmbH
Byk-Gulden Straße 2
D-78467 Konstanz
Germany
T. +49 7531 122860
info@cesco-group.com





Products

Conveyors

- Truck Intake
- Chain Conveyors RF350
- Bucket Belt Elevators BE280

Silos

- Flat Bottom Silos FBS 21,40/14
- Hopper Bottom Silos HBS 4,60/7/T60
- Aeration System

Process equipment

- Dryer
- Temperature Control System

Steel structures

- Conveyor Bridges
- Open/Closed Walkway
- Platforms and Ladders
- Solid frames

Technical data

Type	Inland Grain Terminal
Country	Italy
City	San Fermo di Piubega (MN)
Customer	La Sanfermese spa
Product	Soya bean
Storage capacity t	2.700
Silo type	-
Conveying capacity t/h	120
Milling capacity t/d	-
Year begin	2019
Year end	2019

Services

Basic and detail engineering and design of the general layout and flow-chart of the whole plant.

Design of architectural drawing for the civil works calculation and realization.

Steel structures design and static calculation.



Molino Chiavazza Italy

Turnkey Plant
Product: Wheat
Storage capacity: 18.000 t



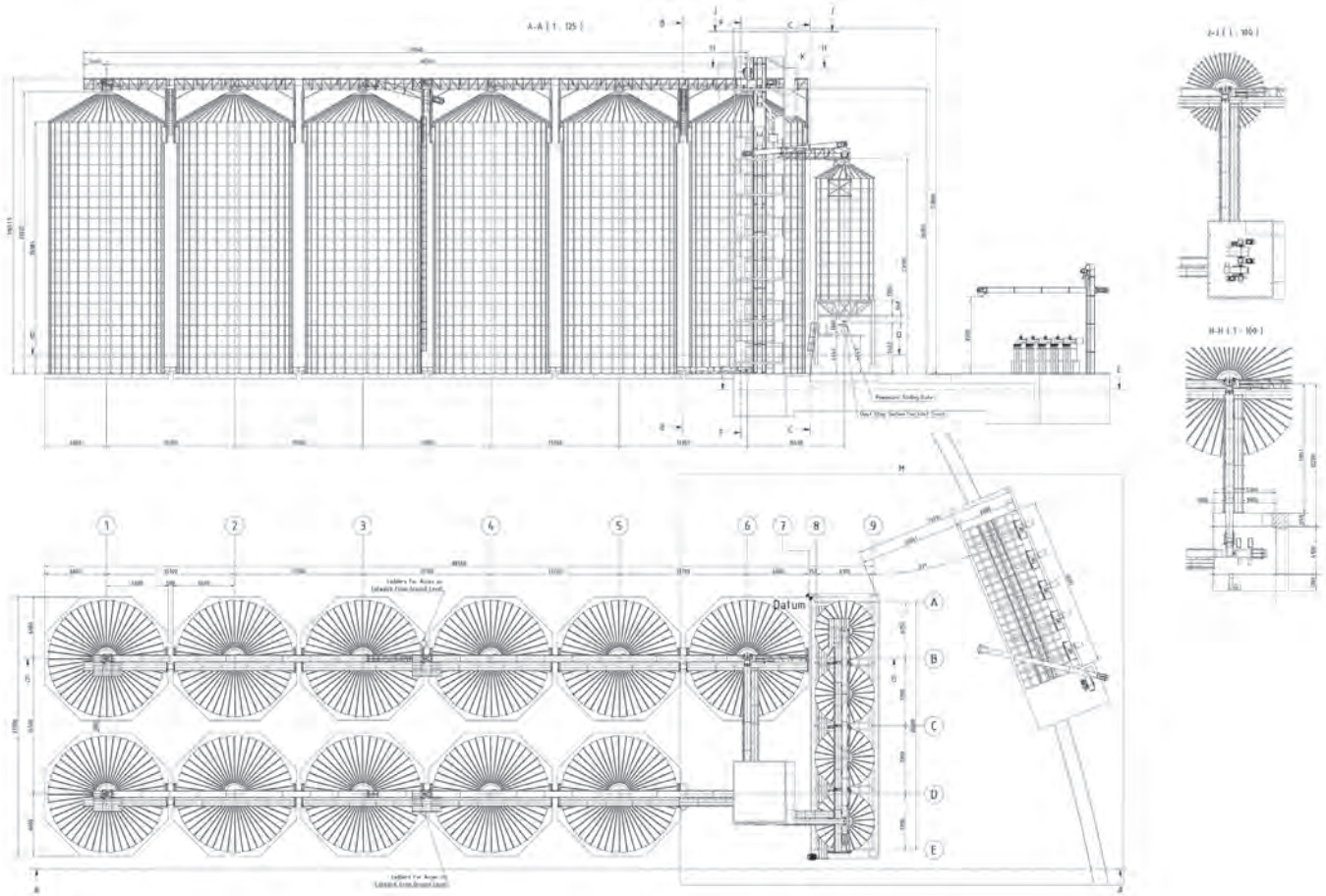
Silo Storage Section for a mill plant with mixed train and truck intake section,
round hopper bottom silos and truck outloading silos.



www.cesco-group.com

CESCO EPC GmbH
Byk-Gulden Straße 2
D-78467 Konstanz
Germany
T. +49 7531 122860
info@cesco-group.com





Products

Conveyors

- Truck Intake
- Train Intake
- Intake Aspiration and Filter
- Chain Conveyors CC420, CC550
- Bucket Belt Elevators BBE660
- Roller Belt Conveyors RBC650E

Silos

- Hopper Bottom Silos HBS 12,20/17/45
- Train/Truck Loading Silos TLS 6,10/11/45
- Aeration System
- Truck Outloading

Process equipment

- Temperature Control System
- Magnetic Separator

Steel structures

- Conveyor Bridges
- Open/Closed Walkway
- Platforms and Ladders
- Machinery Towers

Technical data

Type	Turnkey Plant
Country	Italy
City	Cuneo
Customer	Molino Chiavazza
Product	Wheat
Storage capacity t	18.000
Silo type	Steel
Conveying capacity t/h	400
Milling capacity t/d	-
Year begin	2024
Year end	2025

Services

Basic and Detail Engineering and design of the general layout and flow-chart of the whole plant.

Design of architectural drawing for the civil works calculation and realization.

Steel structures design and static calculation.

Delivery and supervision of installation.

Commissioning.

Training.



Hiwa for Investment North Iraq/Kurdistan

Inland Grain Terminal

Product: Wheat

Storage capacity: 40.000 t



Engineering and design of the general layout and flow-chart of the whole silo installation. Design of architectural drawing for the civil works calculation and realization. Delivery and supervision of installation of the silo plant, conveyors and steel part related to the silo and conveyors.

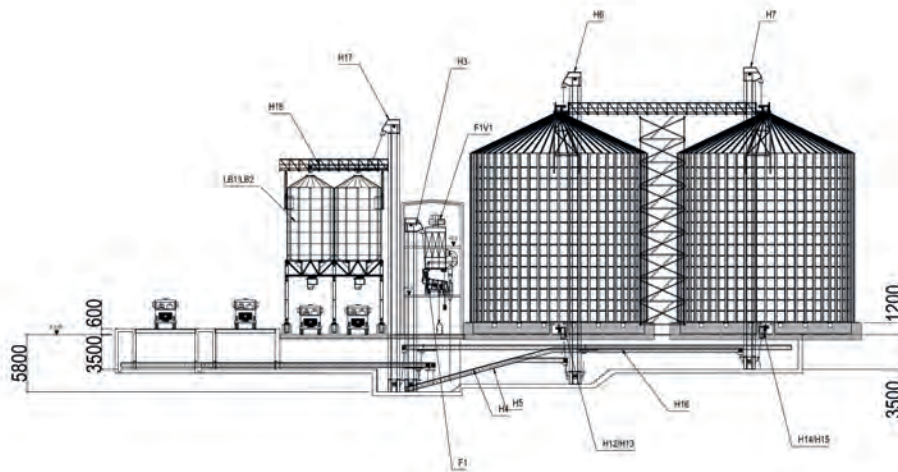
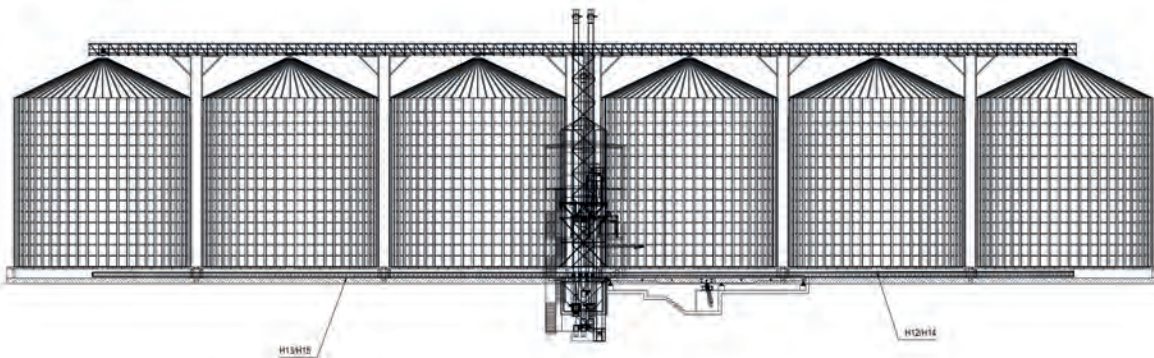
12 metal silos for a total storage capacity of 40,000 tons with complete of accessories, machinery head house, loading and unloading line for trucks, aspiration and ventilation system and telethermometric system.



www.cesco-group.com

CESCO EPC GmbH
Byk-Gulden Straße 2
D-78467 Konstanz
Germany
T. +49 7531 122860
info@cesco-group.com





Products

Conveyors

- Truck Intake
- Intake Aspiration and Filter
- Chain Conveyors TKF300
- Bucket Belt Elevators BE280

Silos

- Flat Bottom Silos FBS 18,30/13
- Train/Truck Loading Silos
- Sweep Augers
- Truck Outloading

Process equipment

- Cleaner
- Temperature Control System
- Magnetic Separator

Steel structures

- Conveyor Bridges
- Open/Closed Walkway
- Platforms and Ladder
- Machinery Towers
- Shed

Technical data

Type	Inland Grain Terminal
Country	North Iraq/Kurdistan
City	-
Customer	Hiwa for Investment
Product	Wheat
Storage capacity t	40.000
Silo type	Steel
Conveying capacity t/h	2X200
Milling capacity t/d	-
Year begin	2015
Year end	2017

Services

Basic and detail engineering and design of the general layout and flow-chart of the whole plant.

Design of architectural drawing for the civil works calculation and realization.

Steel structures design and static calculation.

Delivery and supervision of installation.

Electrical design, delivery and supervision of erection of the central control and automation cabinet and the on-site electrical materia.

Commissioning.

Training.



Almacenadora Almer Mexico

Inland Grain Terminal
Product: wheat
Storage capacity: 70.000 t



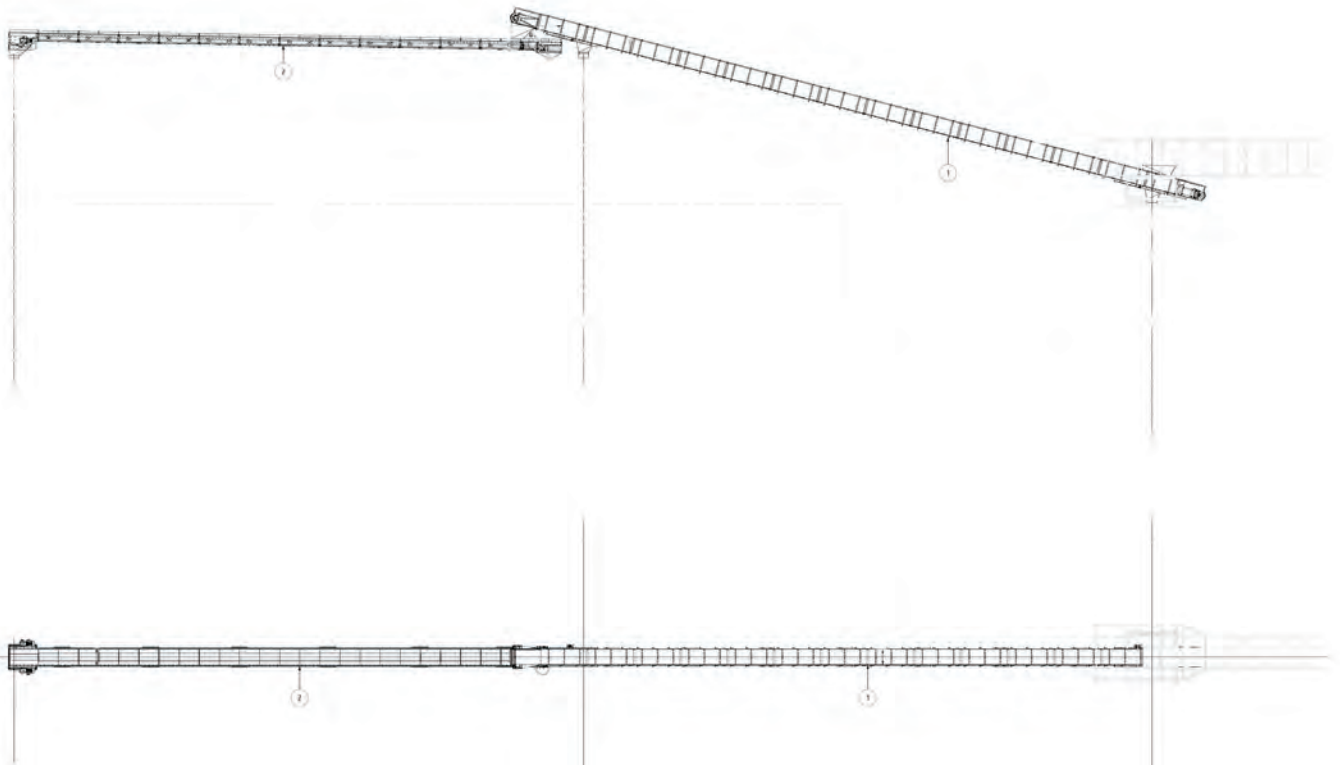
Enclosed belt conveyors for Silo Plant Extension.



www.cesco-group.com

CESCO EPC GmbH
Byk-Gulden Straße 2
D-78467 Konstanz
Germany
T. +49 7531 122860
info@cesco-group.com





Products

Conveyors

- Chain Conveyors CC900
- RBC Roller Belt Conveyors RBC1000E

Technical data

Type	Inland Grain Terminal
Country	Mexico
City	Jalisco
Customer	Almacenadora Almer
Product	wheat
Storage capacity t	70.000
Silo type	Steel
Conveying capacity t/h	850
Milling capacity t/d	-
Year begin	2024
Year end	2024



Al Masirah Saudi Arabia

Inland Grain Terminal
Product: Corn
Storage capacity: 20.000 t

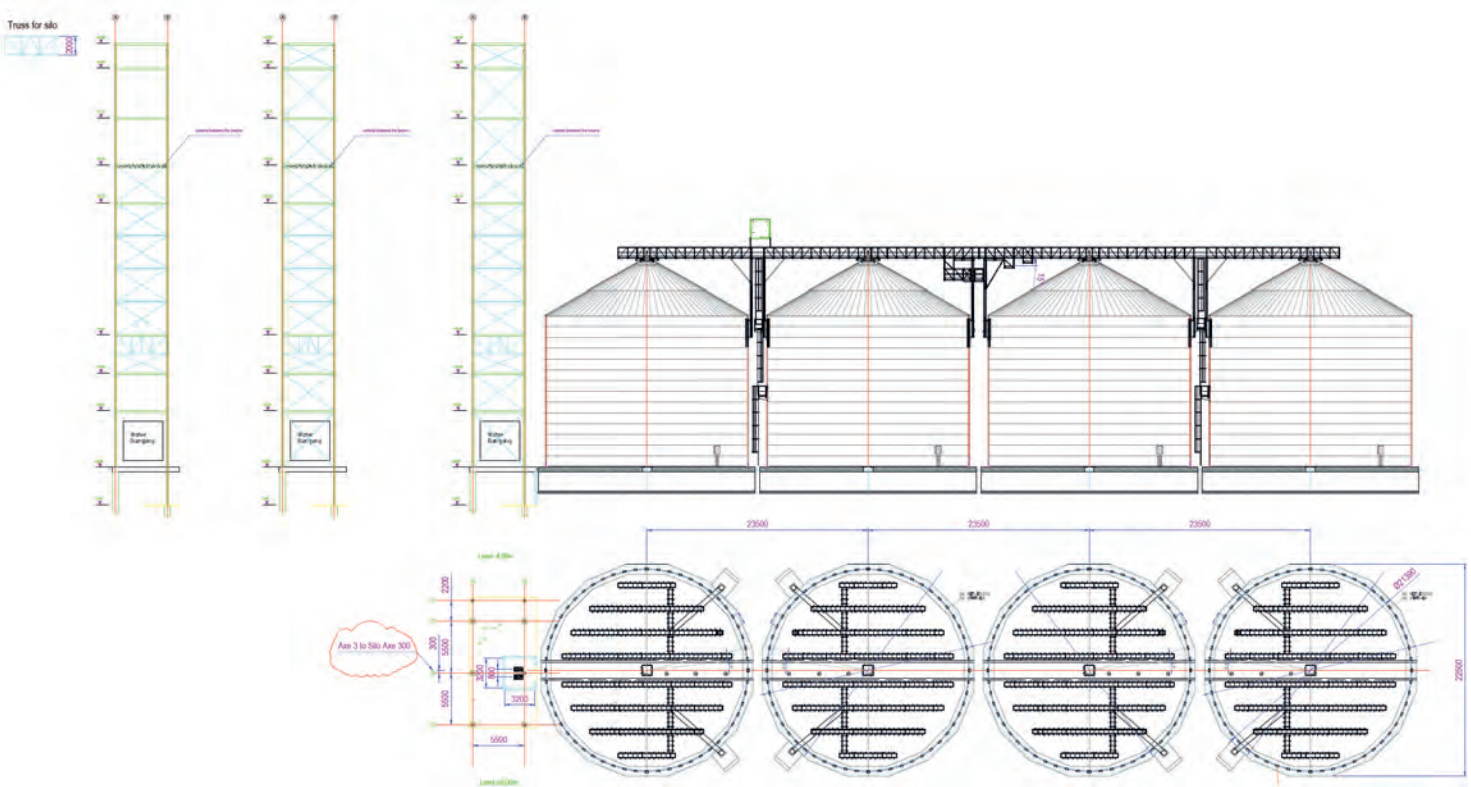
Silo Plant for Starch & Glucose Project



CESCO EPC GmbH
Byk-Gulden Straße 2
D-78467 Konstanz
Germany
T. +49 7531 122860
info@cesco-group.com

www.cesco-group.com





Products

Conveyors

- Chain Conveyors TKF200, TKF300, TKF650
- Bucket Belt Elevators BE280
- RBC Roller Belt Conveyors RGF1000

Silos

- Flat Bottom Silos FBS 21,40/14
- Hopper Bottom Silos HBS 4,60/7/T60
- Aeration System
- Sweep Augers

Process equipment

- Cleaner
- Temperature Control System

Steel structures

- Conveyor Bridges
- Open/Closed Walkway
- Platforms and Ladders
- Machinery Towers
- Integrated Plant Building

Technical data

Type	Inland Grain Terminal
Country	Saudi Arabia
City	Yanbu
Customer	Al Masirah - Yanbu
Product	Corn
Storage capacity t	20.000
Silo type	Steel
Conveying capacity t/h	600+100
Milling capacity t/d	-
Year begin	2019
Year end	2020

Services

Basic and detail engineering and design of the general layout and flow-chart of the whole plant.

Design of architectural drawing for the civil works calculation and realization.

Steel structures design and static calculation.

Delivery and supervision of installation.

Electrical design, delivery and supervision of erection of the central control and automation cabinet and the on-site electrical materia.

Commissioning.



Association Turkmen - gallaonumleri Turkmenistan

Inland Grain Terminal
Product: Wheat
Storage capacity: 100.000 t



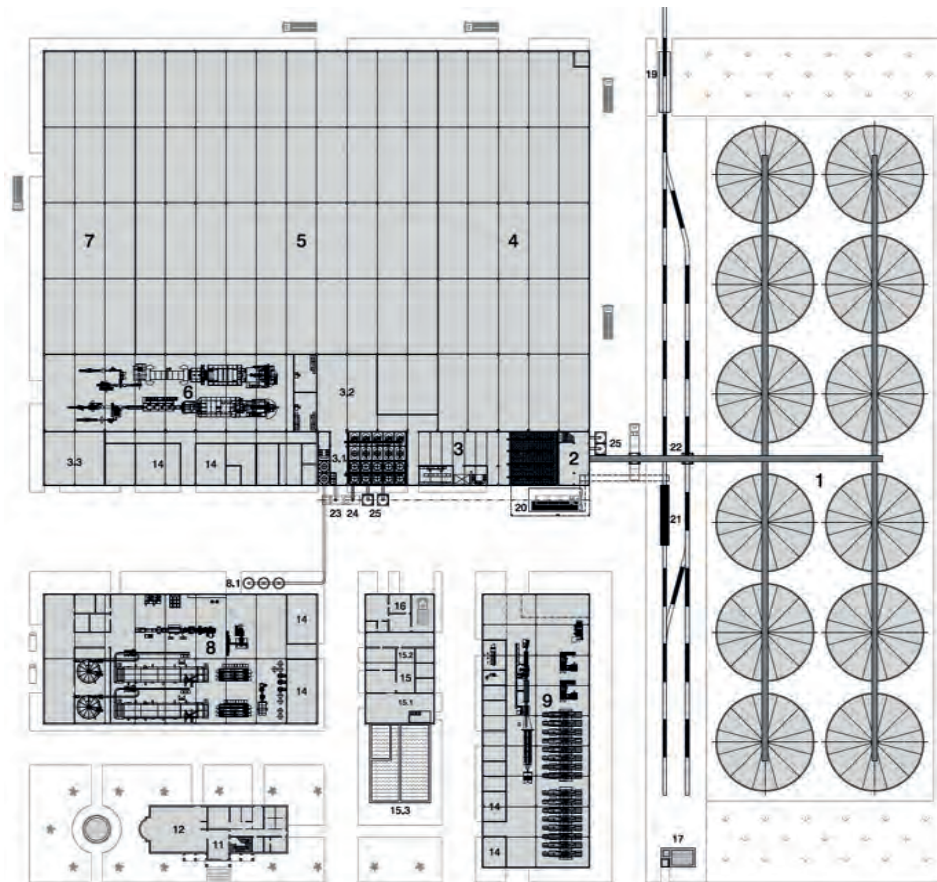
Industrial plant with 12 metal round silos. Silo plant includes intakes for trucks and railway wagons, industrial cleaning, conveyor systems, round silos with flat bottom for storage and the truck and train loading.



www.cesco-group.com

CESCO EPC GmbH
Byk-Gulden Straße 2
D-78467 Konstanz
Germany
T. +49 7531 122860
info@cesco-group.com





Products

Conveyors

- Truck Intake
- Train intake
- Intake Aspiration and Filter
- Chain Conveyors TKF400
- Bucket Belt Elevators BE370

Silos

- Flat Bottom Silos FBS 30,60/11
- Train/Truck Loading Silos
- Smooth Square Silos
- Aeration System
- Sweep Augers
- Truck Outloading
- Train Outloading

Process equipment

- Cleaner
- Temperature Control System
- Magnetic Separator

Steel structures

- Conveyor Bridges
- Open/Closed Walkway
- Platforms and Ladders

Technical data

Type	Inland Grain Terminal
Country	Turkmenistan
City	Ruhabat
Customer	Association Turkmen-gallaonumleri
Product	Wheat
Storage capacity t	100.000
Silo type	Steel
Conveying capacity t/h	200
Milling capacity t/d	-
Year begin	2010
Year end	2011

Services

Basic and detail engineering and design of the general layout and flow-chart of the whole plant.

Design of architectural drawing for the civil works calculation and realization.

Steel structures design and static calculation.

Delivery and supervision of installation.

Commissioning.

Training.



Association Turkmen-gallaonumleri Turkmenistan

Inland Grain Terminal
Product: Wheat
Storage capacity: 50.000 t



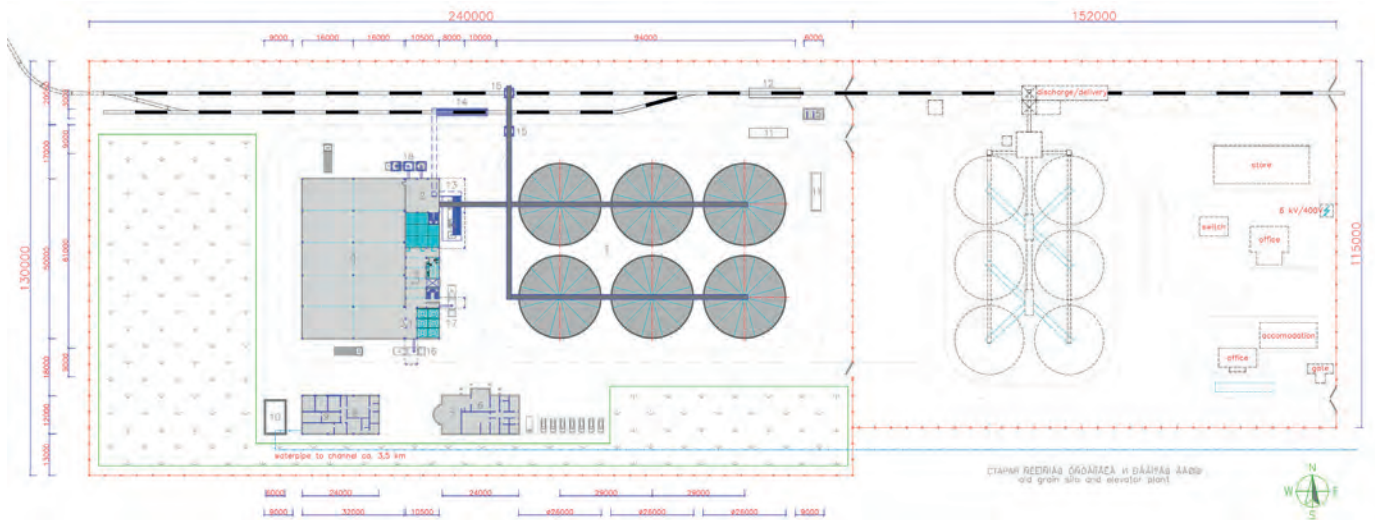
Industrial plant with 6 metal round silos. Silo plant includes intakes for trucks and railway wagons, industrial cleaning, conveyor systems, round silos with flat bottom for storage and the truck and train loading.



www.cesco-group.com

CESCO EPC GmbH
Byk-Gulden Straße 2
D-78467 Konstanz
Germany
T. +49 7531 122860
info@cesco-group.com





Products

Conveyors

- Truck Intake
- Train Intake
- Intake Aspiration and Filter
- Chain Conveyors TKF400
- Bucket Belt Elevators BE370

Silos

- Flat Bottom Silos FBS 30,60/11
- Train/Truck Loading Silos
- Smooth Square Silos
- Aeration System
- Sweep Augers

Process equipment

- Cleaner
- Temperature Control System
- Magnetic Separator

Steel structures

- Conveyor Bridges
- Open/Closed Walkway
- Platforms and Ladders

Technical data

Type	Inland Grain Terminal
Country	Turkmenistan
City	Serdar
Customer	Association Turkmen-gallaonumleri
Product	Wheat
Storage capacity t	100.000
Silo type	Steel
Conveying capacity t/h	200
Milling capacity t/d	-
Year begin	2010
Year end	2011

Services

Basic and detail engineering and design of the general layout and flow-chart of the whole plant.

Design of architectural drawing for the civil works calculation and realization.

Steel structures design and static calculation.

Delivery and supervision of installation.

Commissioning.

Training.



Association Turkmen-gallaonumleri Turkmenistan

Inland Grain Terminal
Product: Wheat
Storage capacity: 100.000 t



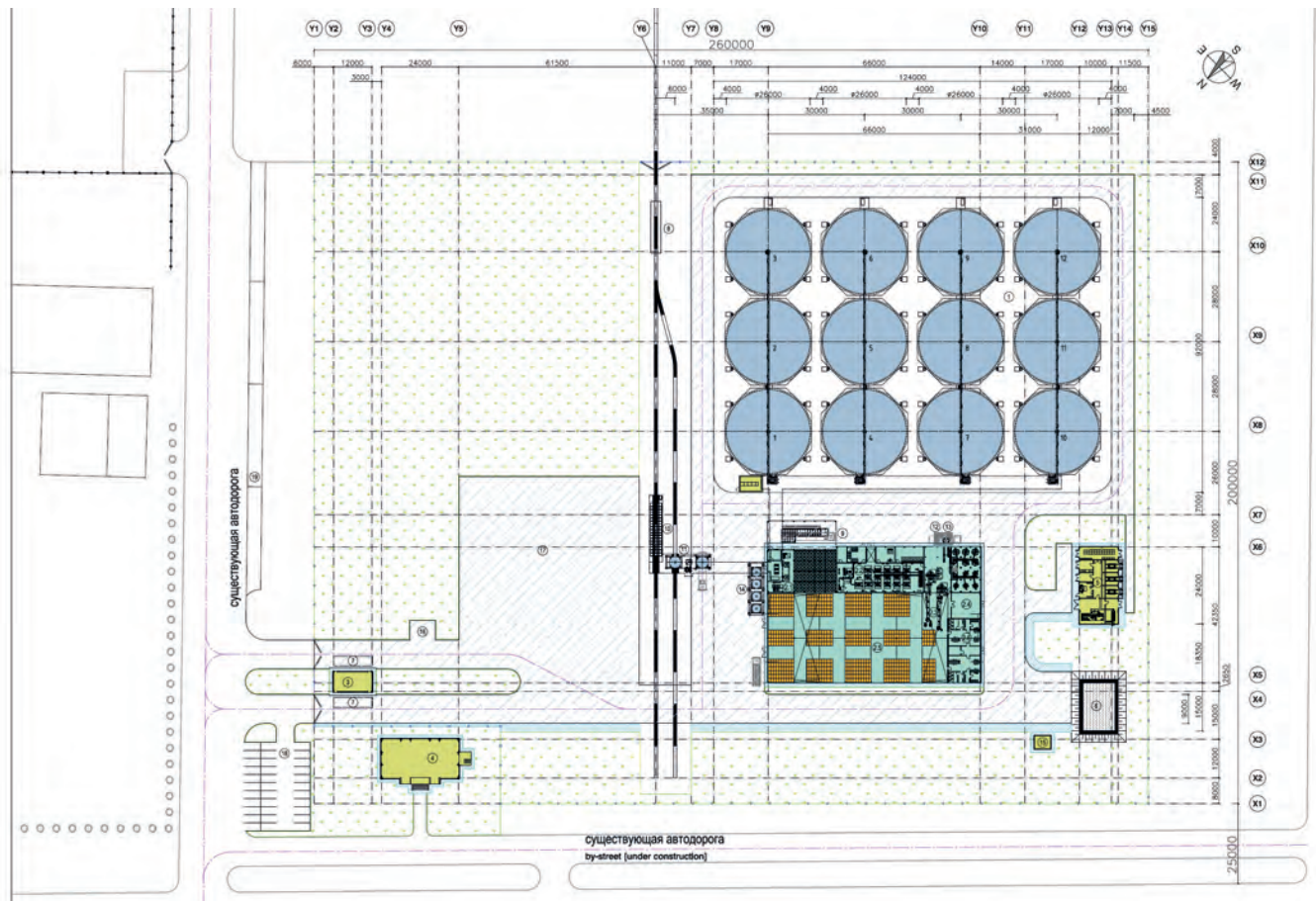
Industrial plant with 12 metal round silos. Silo plant includes intakes for trucks and railway wagons, industrial cleaning, conveyor systems, round silos with flat bottom for storage and the truck and train loading.



www.cesco-group.com

CESCO EPC GmbH
Byk-Gulden Straße 2
D-78467 Konstanz
Germany
T. +49 7531 122860
info@cesco-group.com





Products

Conveyors

- Truck Intake
- Train Intake
- Intake Aspiration and Filter
- Chain Conveyors TKF400
- Bucket Belt Elevators BE370

Silos

- Flat Bottom Silos FBS 30,60/11
- Train/Truck Loading Silos
- Smooth Square Silos
- Aeration System
- Sweep Augers

Process equipment

- Cleaner
- Temperature Control System
- Magnetic Separator

Steel structures

- Conveyor Bridges
- Open/Closed Walkway
- Platforms and Ladders

Technical data

Type	Inland Grain Terminal
Country	Turkmenistan
City	Turkmenabat
Customer	Association Turkmen-gallaonumleri
Product	Wheat
Storage capacity t	100.000
Silo type	Steel
Conveying capacity t/h	200
Milling capacity t/d	-
Year begin	2010
Year end	2011

Services

Basic and detail engineering and design of the general layout and flow-chart of the whole plant.

Design of architectural drawing for the civil works calculation and realization.

Steel structures design and static calculation.

Delivery and supervision of installation.

Commissioning.

Training.



Association Turkmen-gallaonumleri Turkmenistan

Inland Grain Terminal
Product: Wheat
Storage capacity: 50.000 t



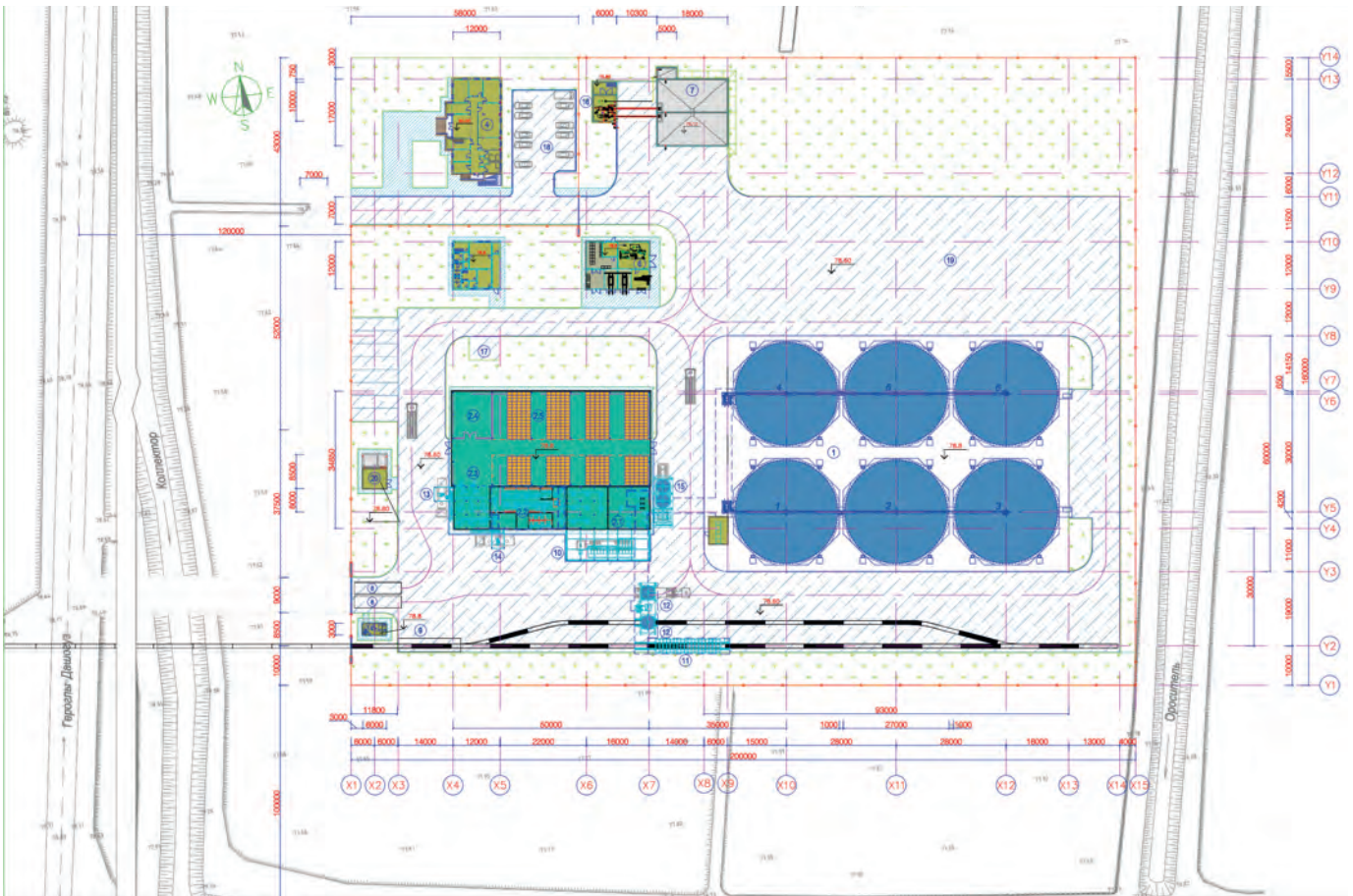
Industrial plant with 6 metal round silos. Silo plant includes intakes for trucks and railway wagons, industrial cleaning, conveyor systems, round silos with flat bottom for storage and the truck and train loading.



www.cesco-group.com

CESCO EPC GmbH
Byk-Gulden Straße 2
D-78467 Konstanz
Germany
T. +49 7531 122860
info@cesco-group.com





Products

Conveyors

- Truck Intake
- Train Intake
- Intake Aspiration and Filter
- Chain Conveyors TKF400
- Bucket Belt Elevators BE370

Silos

- Flat Bottom Silos FBS 30,60/11
- Train/Truck Loading Silos
- Smooth Square Silos
- Aeration System
- Sweep Augers

Process equipment

- Cleaner
- Temperature Control System
- Magnetic Separator

Steel structures

- Conveyor Bridges
- Open/Closed Walkway
- Platforms and Ladders

Technical data

Type	Inland Grain Terminal
Country	Turkmenistan
City	Dashoguz
Customer	Association Turkmen-gallaonumleri
Product	Wheat
Storage capacity t	50.000
Silo type	Steel
Conveying capacity t/h	200
Milling capacity t/d	-
Year begin	2010
Year end	2011

Services

Basic and detail engineering and design of the general layout and flow-chart of the whole plant.

Design of architectural drawing for the civil works calculation and realization.

Steel structures design and static calculation.

Delivery and supervision of installation.

Commissioning.

Training.



Association Turkmen-gallaonumleri Turkmenistan

Inland Grain Terminal
Product: Wheat
Storage capacity: 50.000 t



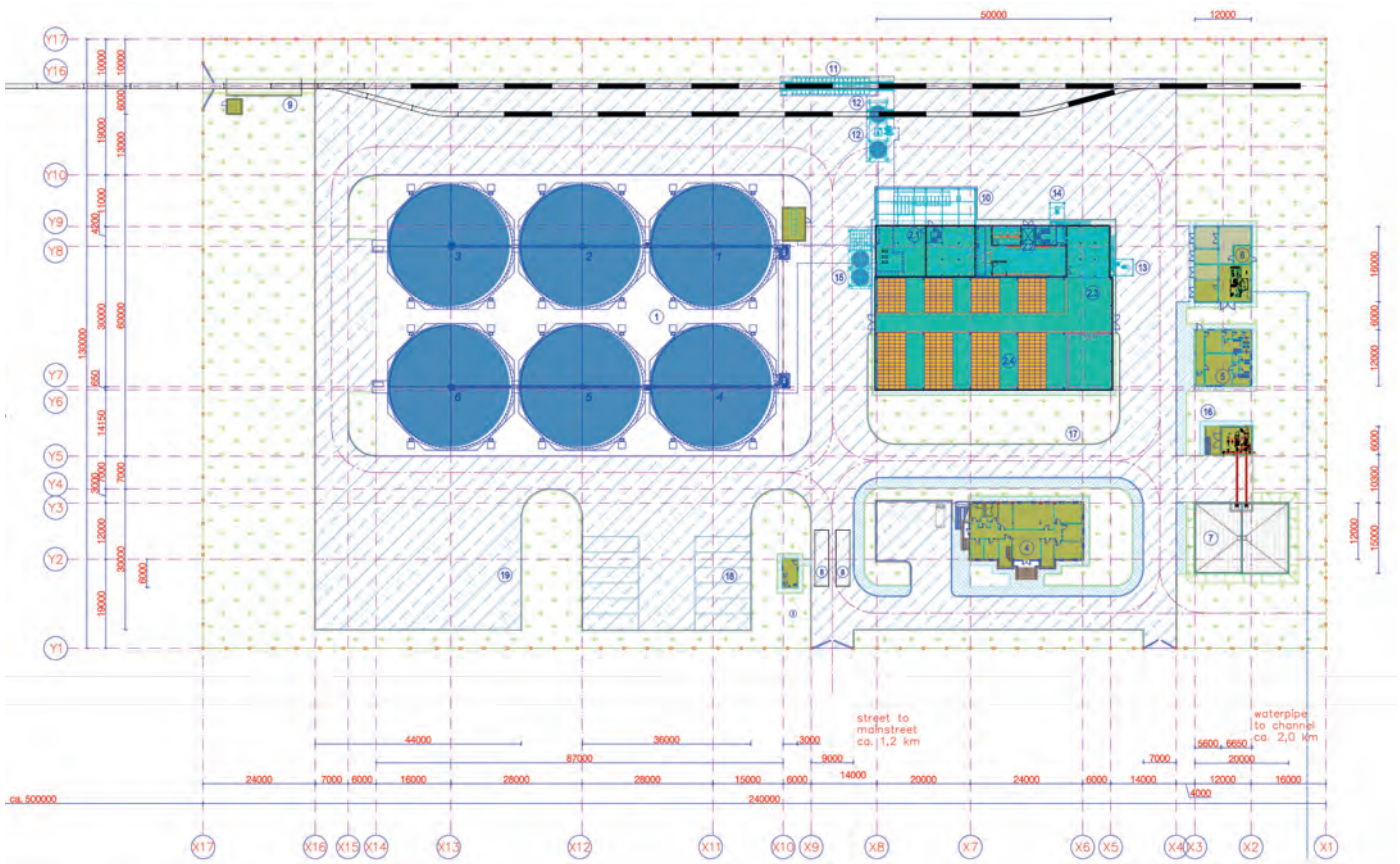
Industrial plant with 6 metal round silos. Silo plant includes intakes for trucks and railway wagons, industrial cleaning, conveyor systems, round silos with flat bottom for storage and the truck and train loading.



www.cesco-group.com

CESCO EPC GmbH
Byk-Gulden Straße 2
D-78467 Konstanz
Germany
T. +49 7531 122860
info@cesco-group.com





Products

Conveyors

- Truck Intake
- Train Intake
- Intake Aspiration and Filter
- Chain Conveyors TKF400
- Bucket Belt Elevators BE370

Silos

- Flat Bottom Silos FBS 30,60/11
- Train/Truck Loading Silos
- Smooth Square Silos
- Aeration System
- Sweep Augers
- Truck Outloading
- Train Outloading

Process equipment

- Cleaner
- Temperature Control System
- Magnetic Separator

Steel structures

- Conveyor Bridges
- Open/Closed Walkway
- Platforms and Ladders

Technical data

Type	Inland Grain Terminal
Country	Turkmenistan
City	Mary
Customer	Association Turkmen-gallaonumleri
Product	Wheat
Storage capacity t	50.000
Silo type	Steel
Conveying capacity t/h	200
Milling capacity t/d	-
Year begin	2010
Year end	2011

Services

Basic and detail engineering and design of the general layout and flow-chart of the whole plant.

Design of architectural drawing for the civil works calculation and realization.

Steel structures design and static calculation.

Delivery and supervision of installation.

Commissioning.

Training.



MHP Mironovka Ukraine

Inland Grain Terminal
Product: Corn & Sunflower
Storage capacity: 105.000 t



Engineering and design of the general layout and flow-chart of the whole silo installation. Design of architectural drawing for the civil works calculation and realization. Delivery and supervision of installation of the silo plant, conveyors and steel part related to the silo and conveyors.

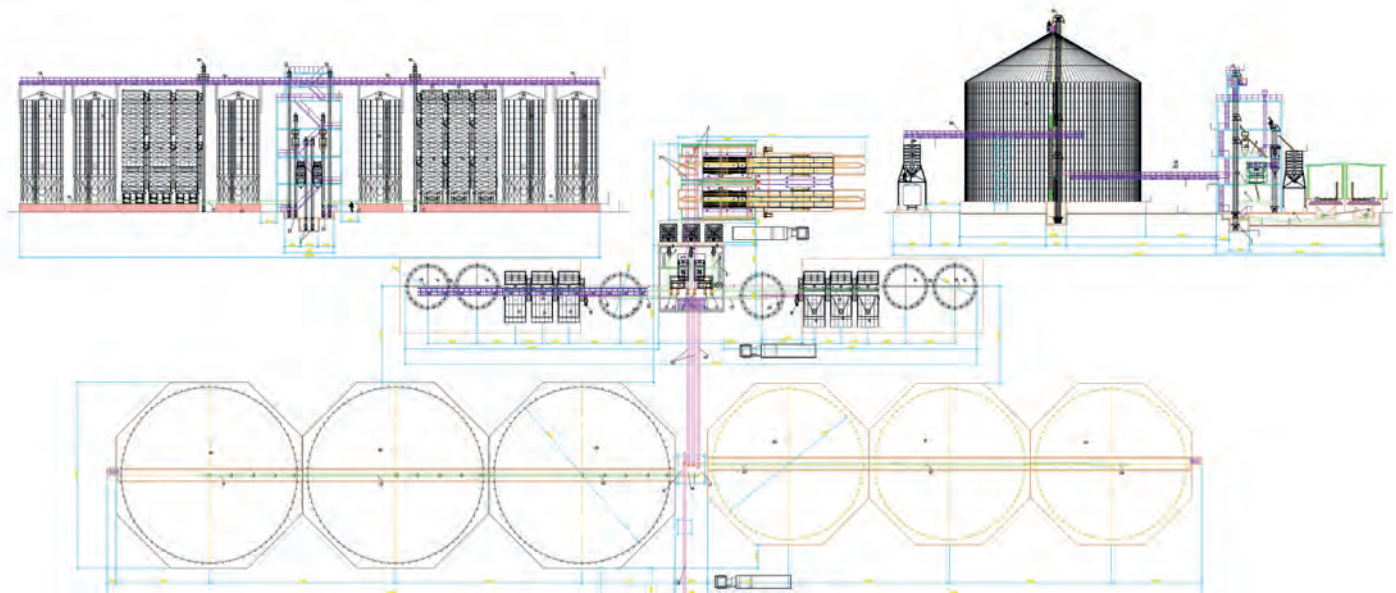
Flat bottom round metal silos, intake facilities, dryer, pre-cleaning and loading/unloading line for truck and train.



www.cesco-group.com

CESCO EPC GmbH
Byk-Gulden Straße 2
D-78467 Konstanz
Germany
T. +49 7531 122860
info@cesco-group.com





Products

Conveyors

- Truck Intake
- Intake Aspiration and Filter
- Chain Conveyors TKF300
- Bucket Belt Elevators BE280

Silos

- Flat Bottom Silos FBS 30,60/21, FBS 30,60/16
- Hopper Bottom Silos HBS 7,60/09/45
- Train/Truck Loading Silos
- Buffer bins
- Aeration System
- Sweep Augers
- Truck Outloading
- Train Outloading

Process equipment

- Dryer
- Cleaner
- Temperature Control System
- Magnetic Separator

Steel structures

- Conveyor Bridges
- Open/Closed Walkway
- Platforms and Ladders
- Machinery Towers
- Shed

Technical data

Type	Inland Grain Terminal
Country	Ukraine
City	Jampol
Customer	MHP Mironovka
Product	Corn & Sunflower
Storage capacity t	105.000
Silo type	Steel
Conveying capacity t/h	100
Milling capacity t/d	-
Year begin	2011
Year end	2012

Services

Basic and detail engineering and design of the general layout and flow-chart of the whole plant.

Design of architectural drawing for the civil works calculation and realization.

Steel structures design and static calculation.

Delivery and supervision of installation.

Electrical design, delivery and supervision of erection of the central control and automation cabinet and the on-site electrical material.

Commissioning.

Training.



Convex / EPICENTER K Ukraine

Inland Grain Terminal
Product: wheat
Storage capacity: 120.000 t

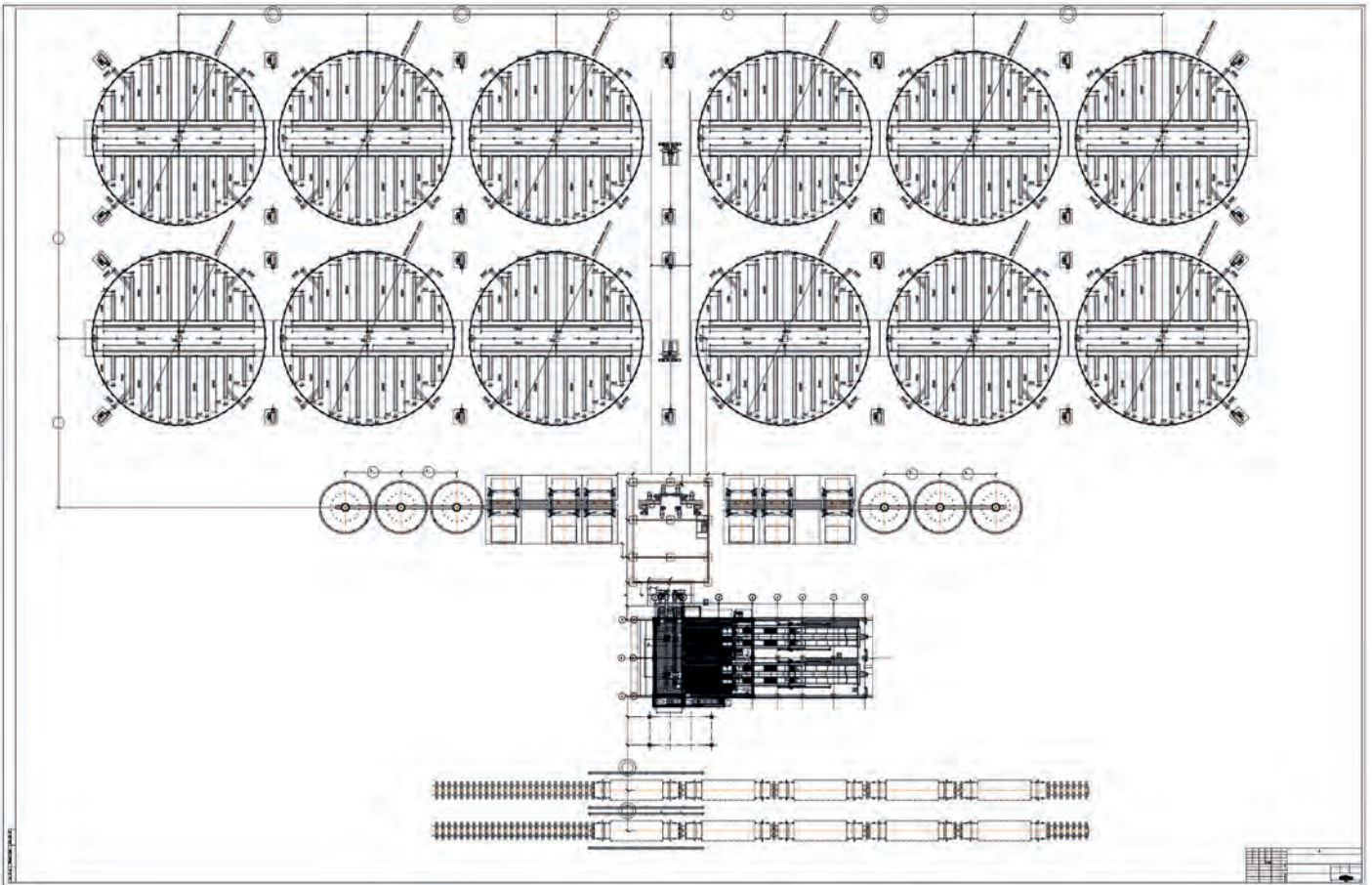
Machine delivery order, Convex.



www.cesco-group.com

CESCO EPC GmbH
Byk-Gulden Straße 2
D-78467 Konstanz
Germany
T. +49 7531 122860
info@cesco-group.com





Products

Conveyors

- Chain Conveyors TKF420 TKF540
- Bucket Belt Elevators BE370 BE660

Silos

- Train/Truck Loading Silos

Technical data

Type	Inland Grain Terminal
Country	Ukraine
City	-
Customer	Convex / EPICENTER K
Product	wheat
Storage capacity t	120.000
Silo type	-
Conveying capacity t/h	400+200
Milling capacity t/d	-
Year begin	2017
Year end	2018

Port Grain Terminals



References by countries

Egypt (EG)

CONVEYING SYSTEM

2023 100.000 mt ECSS Alexandria Pier

Qatar (QA)

PORT SILO TERMINAL

2021 300.000 mt Al Jabeer Co.

United Arab Emirates (AE)

PORT SILO TERMINAL

2022 150.000 mt SIMATECH Port terminal

Saudi Arabia (SA)

PORT SILO TERMINAL

2025 200.000 mt United Feed Company



CESCO EPC GmbH
Byk-Gulden Straße 2
D-78467 Konstanz
Germany
T. +49 7531 122860
info@cesco-group.com

www.cesco-group.com





ECSS Egypt

Port Grain Terminal

Product:

Storage capacity: 100.000 t



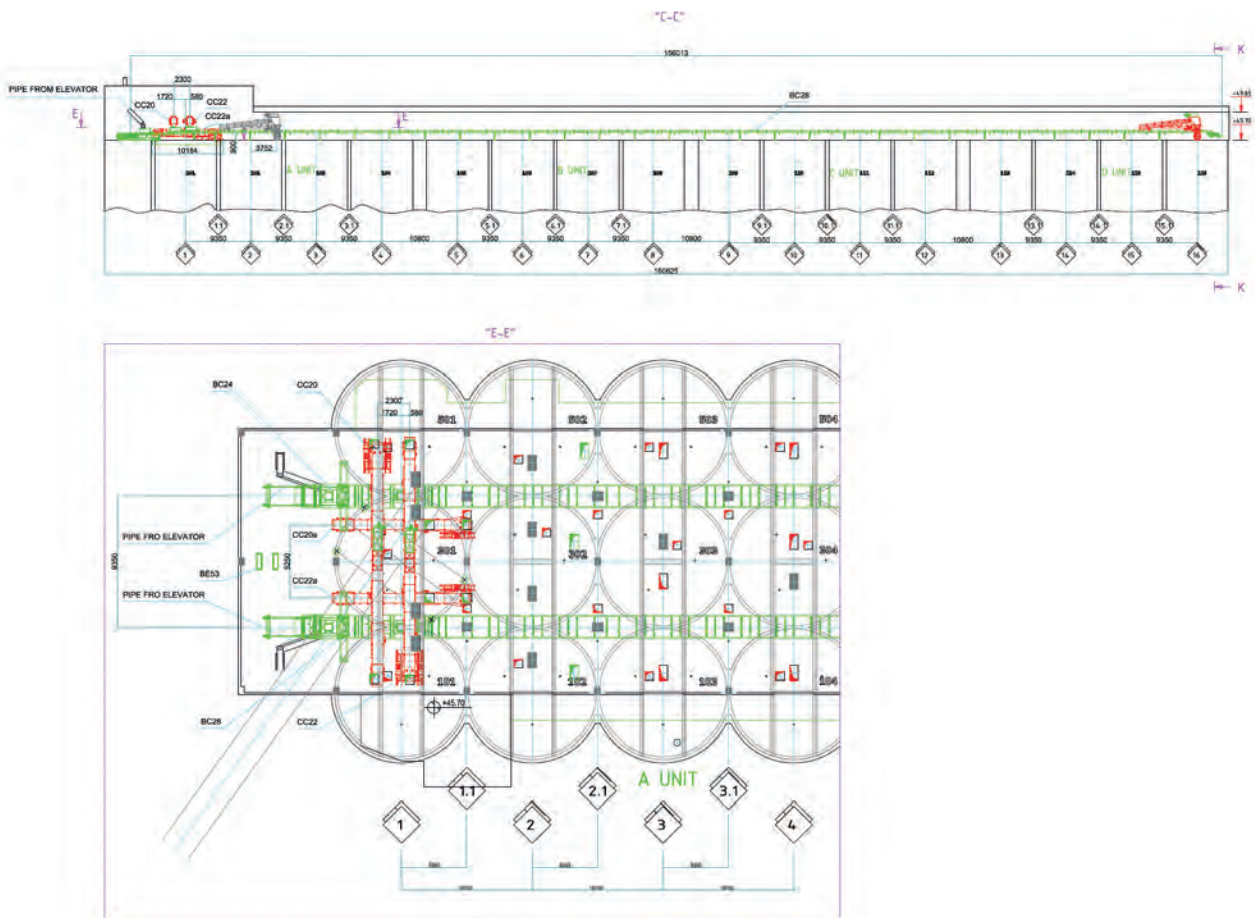
Rehabilitation of equipment for silo pier 85 in Alexandria port.



CESCO EPC GmbH
Byk-Gulden Straße 2
D-78467 Konstanz
Germany
T. +49 7531 122860
info@cesco-group.com

www.cesco-group.com





Products

Conveyors

- Jetty Conveyors
- Chain Conveyors CC650
- RBC Roller Belt Conveyors RBC1000H

Process equipment

- Spot Filter

Technical data

Type	Port Grain Terminal
Country	Egypt
City	Alexandria
Customer	ECSS
Product	-
Storage capacity t	100.000
Silo type	Concrete
Conveying capacity t/h	600
Milling capacity t/d	-
Year begin	2021
Year end	2023

Services

Basic and detail engineering and design of the general layout and flow-chart of the whole plant.

Delivery and supervision of installation.

Electrical design, delivery and supervision of erection of the central control and automation cabinet and the on-site electrical material.

Commissioning.

Training.



Al Jabeer Co. Qatar

Port Grain Terminal
Product: Rice
Storage capacity: 300.000 t



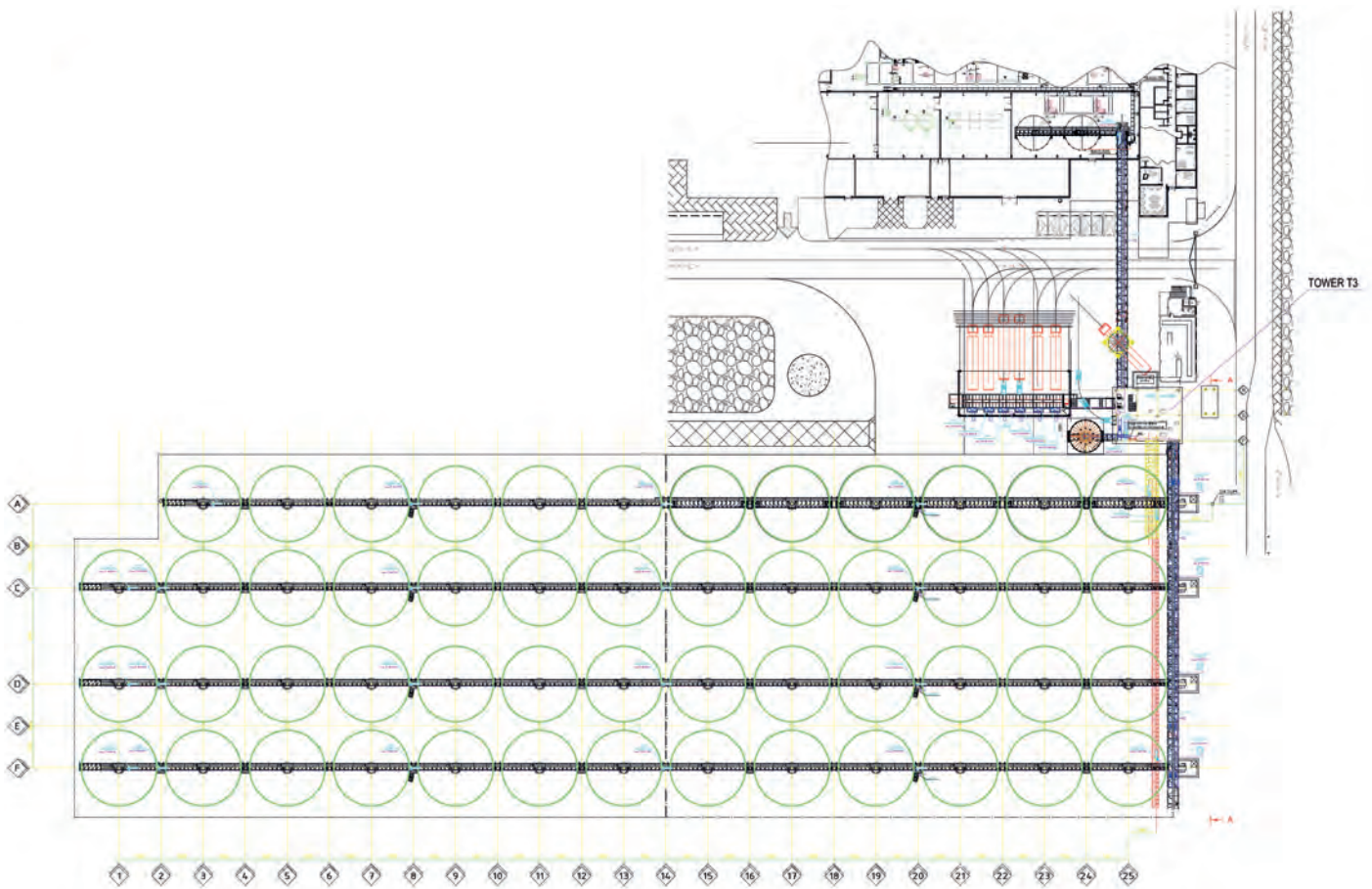
Silo Plant (receiving of rice from jetty), cleaning and silo loading, Al Jabeer Co.



CESCO EPC GmbH
Byk-Gulden Straße 2
D-78467 Konstanz
Germany
T. +49 7531 122860
info@cesco-group.com

www.cesco-group.com





Products

Conveyors

- Jetty Conveyors
- Chain Conveyors TKF1000, TKF520
- Bucket Belt Elevators BE1550, BE660, BE180
- RBC Roller Belt Conveyors RB500, RB650, RGF1000

Silos

- Hopper Bottom Silos HBS 4,60/3/T35
- Aeration System
- Sweep Augers

Process equipment

- Cleaner
- Temperature Control System
- Spot Filter
- Magnetic Separator

Steel structures

- Conveyor Bridges
- Open/Closed Walkway
- Machinery Towers

Technical data

Type	Port Grain Terminal
Country	Qatar
City	Doha
Customer	Al Jabeer Co.
Product	Rice
Storage capacity t	300.000
Silo type	Concrete
Conveying capacity t/h	600+200
Milling capacity t/d	-
Year begin	2019
Year end	2021

Services

Basic and detail engineering and design of the general layout and flow-chart of the whole plant.

Delivery and supervision of installation.

Electrical design, delivery and supervision of erection of the central control and automation cabinet and the on-site electrical material.

Commissioning.

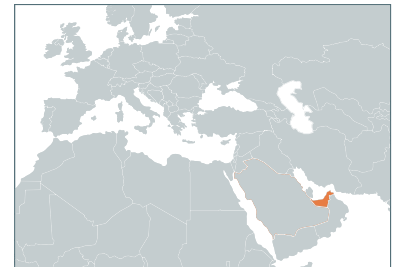
Training.



Simatech Port terminal

United Arab Emirates

Port Grain Terminal
Product: Wheat
Storage capacity: 150.000 t



Port Grain Terminal, Simatech.

The Simatech Port Terminal includes 20 cylindrical concrete silos and 16 star bin silos, offering a total storage capacity of 150,000 tons, dedicated to wheat logistics. Grain intake is managed via two 12x5m truck pits with chain conveyors or two 600 t/h roller belt conveyors connected to a ship unloader, with magnetic grid separators for removing metallic contaminants. The grain is transferred through two lines of 600 t/h to storage, the truck loading system, or for recirculation.

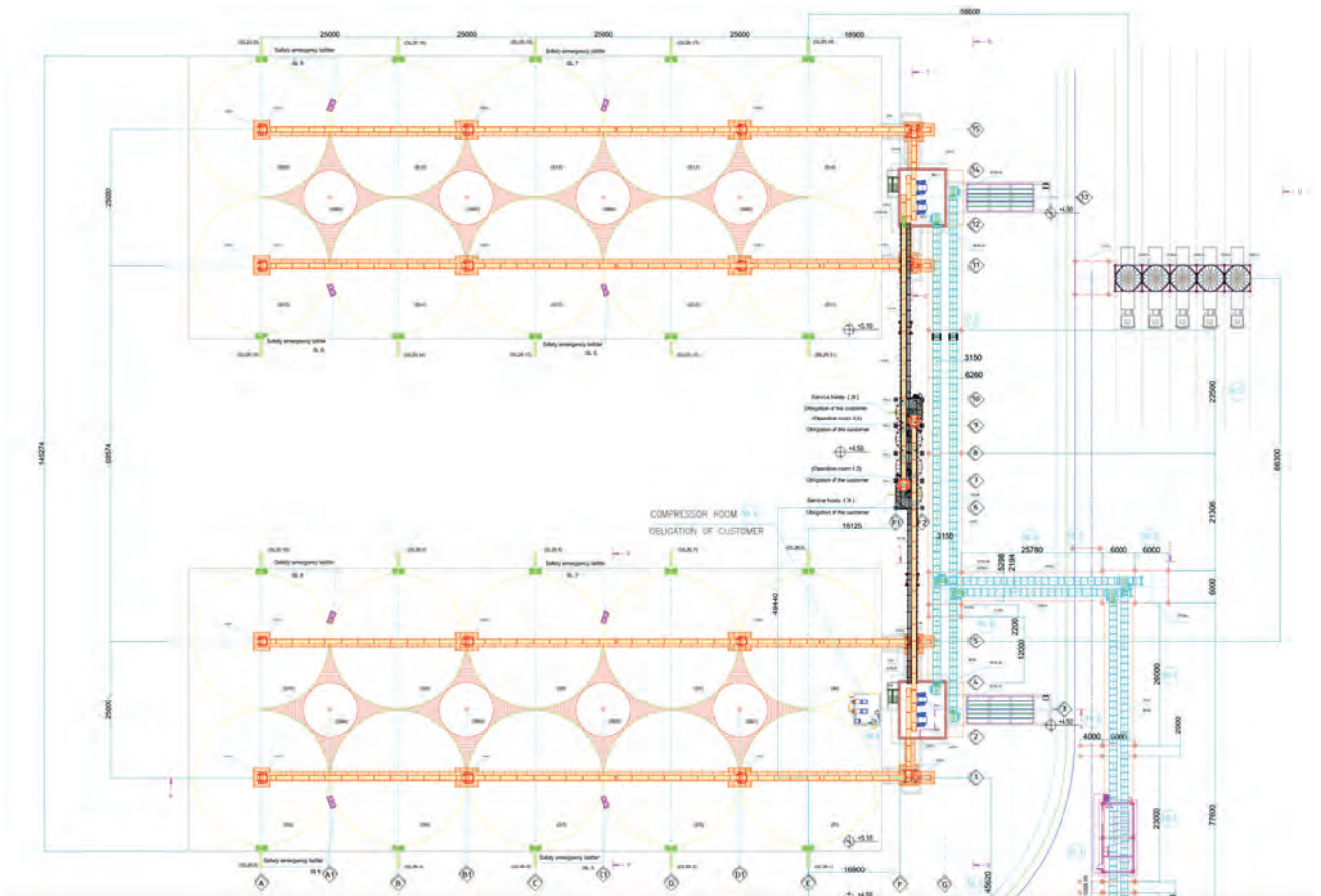
Reclaiming and recycling lines operate at 2x300 t/h, moving grain to four bulk truck silos or back to storage. Additional systems include ventilation, temperature and level monitoring, sweep augers, catwalks, and air filtration. Both grain receiving and loading lines, as well as storage silos, support simultaneous loading, unloading, and bulk operations.



CESCO EPC GmbH
 Byk-Gulden Straße 2
 D-78467 Konstanz
 Germany
 T. +49 7531 122860
 info@cesco-group.com

www.cesco-group.com





Products

Conveyors

- Jetty Conveyors
- Chain Conveyors TKF650, TKF520
- Bucket Belt Elevators BE900
- RBC Roller Belt Conveyors RBC1000H

Silos

- Hopper Bottom Silos HBS 4,60/13/T45
- Aeration System
- Sweep Augers
- Truck Outloading

Process equipment

- Temperature Control System
- Spot Filter
- Magnetic Separator

Steel structures

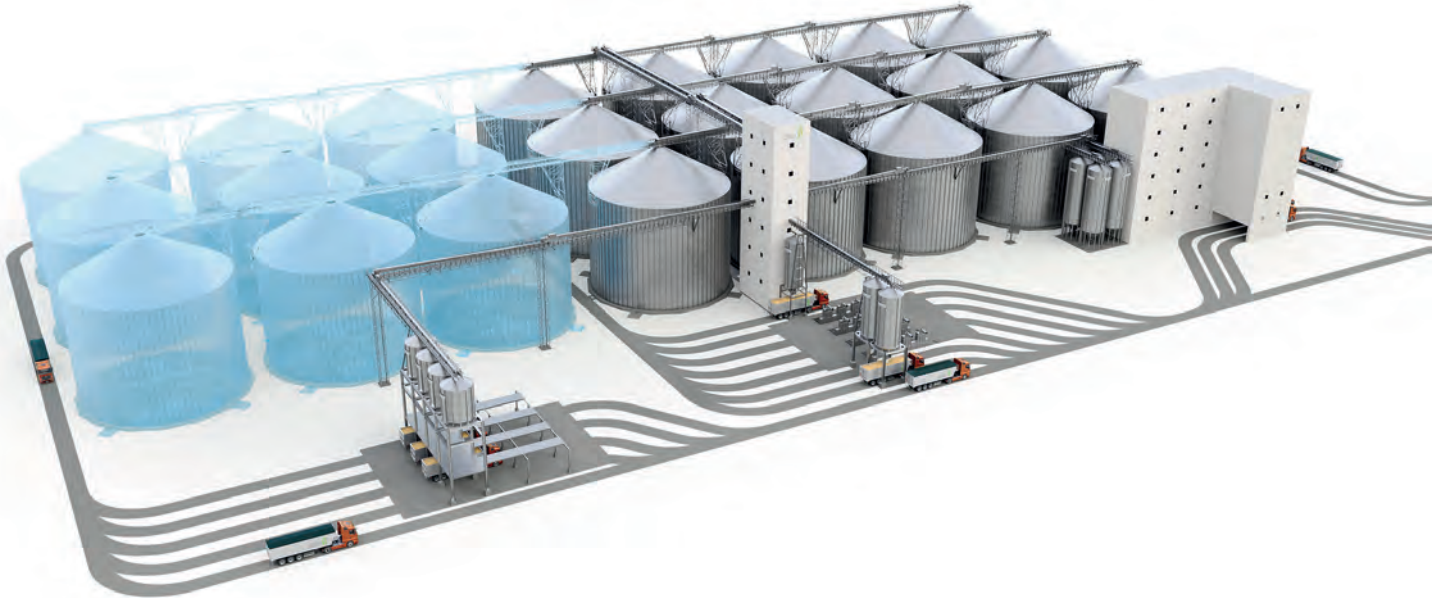
- Conveyor Bridges
- Open/Closed Walkway
- Machinery Towers
- Platforms and Ladders

Technical data

Type	Port Grain Terminal
Country	United Arab Emirates
City	Dubai
Customer	SIMATECH Port terminal
Product	Wheat
Storage capacity t	150.000
Silo type	Concrete
Conveying capacity t/h	600+300
Milling capacity t/d	-
Year begin	2019
Year end	2022

Services

Design of architectural drawing for the civil works calculation and realization.
 Steel structures design and static calculation.
 Delivery and supervision of installation.
 Training.



UFC - United Feed Company Saudi Arabia

Port Grain Terminal
Product: Wheat / Barley
Storage capacity: 200.000 t



200.000 t Jazan Port Terminal.

This Grain Port Terminal is equipped with 200,000-ton cylindrical silos and a 20,000-ton flat warehouse dedicated to storing wheat, barley, and soya meal for feed production.

The Grain Storage Section has four truck intake pits (14m) with dust aspiration, offering a total capacity of 4x200 t/h, transferring grain via 2x400 t/h lines to pre-cleaning, silo or truck loading, and bagging; reclaiming lines operate at 2x250 t/h, with fumigation, ventilation, and monitoring systems, while grain and soya meal lines can operate jointly.

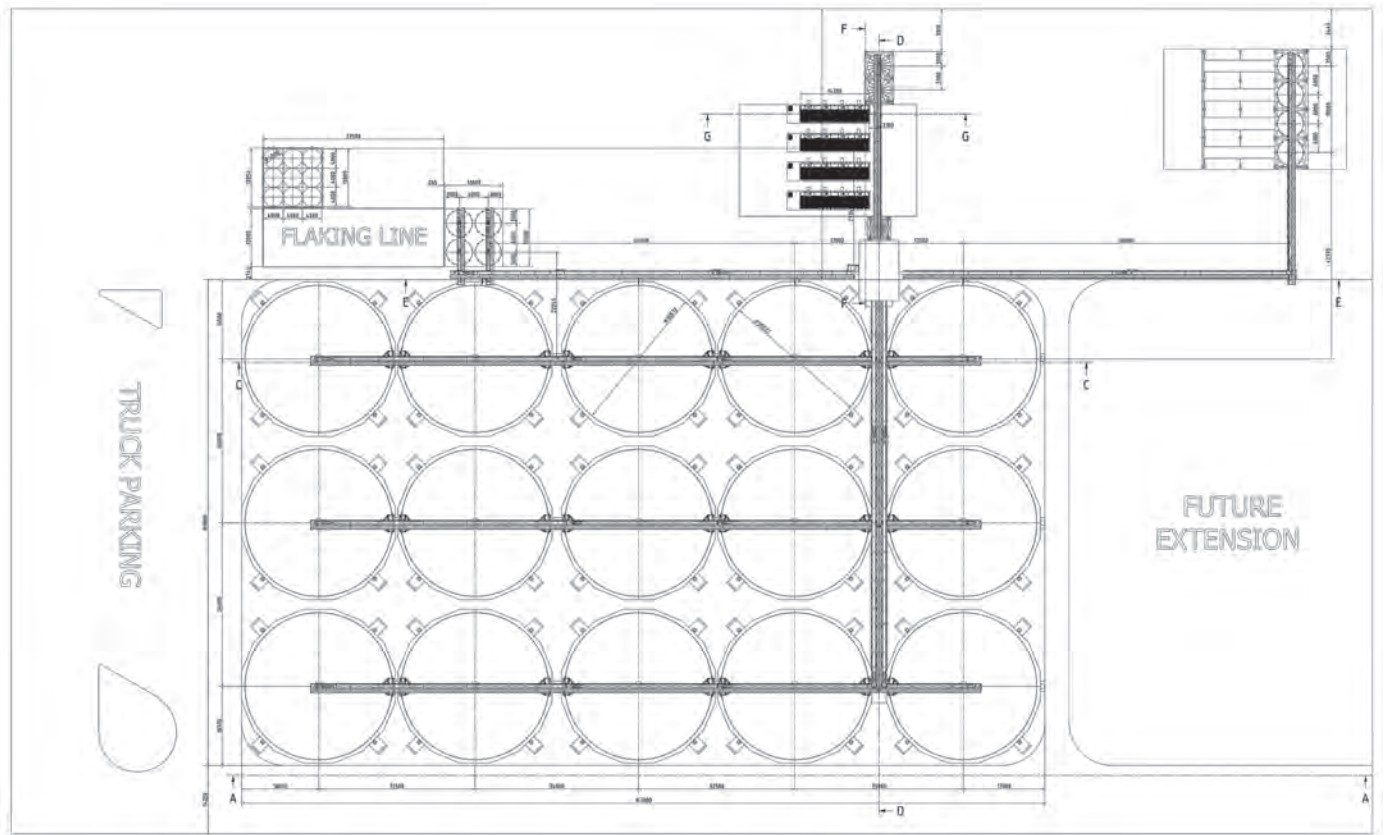
The Soya Storage Section includes two truck pits (14m each) with dust aspiration and an intake capacity of 2x125 t/h. Soya meal is transferred at 250 t/h using conveyors and elevators with magnetic hoppers, and directed to the 20,000-ton warehouse or bagging line, which features an automatic evacuation system.



CESCO EPC GmbH
 Byk-Gulden Straße 2
 D-78467 Konstanz
 Germany
 T. +49 7531 122860
 info@cesco-group.com

www.cesco-group.com





Products

Conveyors

- Truck Intake
- Intake aspiration and filter
- Chain Conveyors CC420, CC550
- Bucket Belt Elevators BBE180, BBE660

Silos

- Flat Bottom Silos FBS 30,6/20
- Train/Truck Loading Silos TLS-S 5,30/05/45, TLS-S 4,60/07/60, TLS-S 4,60/09/45
- Sweep Augers
- Truck Outloading

Process equipment

- Cleaner
- Temperature Control System
- Spot Filter
- Magnetic Separator
- Bagging Line

Steel structures

- Conveyor Bridges
- Open/Closed Walkway
- Platforms and Ladders
- Solid frames

Technical data

Type	Port Grain Terminal
Country	Saudi Arabia
City	Jazan
Customer	UFC - United Feed Company
Product	Wheat / Barley
Storage capacity t	200.000
Silo type	Steel
Conveying capacity t/h	400
Bagging capacity t/h	4x50
Year begin	2024
Year end	2025

Services

Basic and detail engineering and design of the general layout and flow-chart of the whole plant.

Design of architectural drawing for the civil works calculation and realization.

Steel structures design and static calculation.

Delivery and supervision of installation.

Electrical design, delivery and supervision of erection of the central control and automation cabinet and the on-site electrical material.

Commissioning.

Training.

Turnkey Plants



References by countries

Belorussia (BY)

FEED MILL BUILDING WITH SQUARE SILOS FOR RAW MATERIAL AND FINISHED PRODUCT

2015 OAO Mzyrer NPZ

Cameroon (CM)

MILL BUILDING AND SILO PLANT

2024 Convex/SCTB

Denmark (DK)

TRUCK LOADING SYSTEM OF WOOD PELLET

2022 Aarhus Omni Bulk A/S

India (IN)

RICE MILL BUILDING WITH SQUARE SILOS FOR RAW MATERIAL AND FINISHED PRODUCT

2020 Ebro

Romania (RO)

CIVIL WORKS, BUILDING AND PROCESSING OF CORN COBS AND SUNFLOWER

2018 Moldova Semente

Russia (RU)

CIVIL WORKS, BUILDING AND PROCESSING OF CORN COBS AND SUNFLOWER

2019 Sigma

2021 Dolina Semyan

Serbia (RS)

CIVIL WORKS, BUILDING AND PROCESSING OF CORN COBS AND SUNFLOWER

2016 Bechey

Sweden (SE)

OAT MILL BUILDING WITH ROUND AND SQUARE SILOS FOR RAW MATERIAL AND FINISHED PRODUCT

2022 Afry/Lantmännen Oats

Turkmenistan (TM)

FLOUR MILL BUILDING WITH SQUARE SILOS FOR RAW MATERIAL AND FINISHED PRODUCT

2011 Turkmen- gallaonumleri

2011 Turkmen- gallaonumleri

2011 Turkmen- gallaonumleri

2011 Turkmen- gallaonumleri

2011 Turkmen- gallaonumleri



www.cesco-group.com

CESCO EPC GmbH
Byk-Gulden Straße 2
D-78467 Konstanz
Germany
T. +49 7531 122860
info@cesco-group.com





OAO Mzyrer NPZ **Belorussia**

Turnkey Plant
Product: -
Storage capacity: -

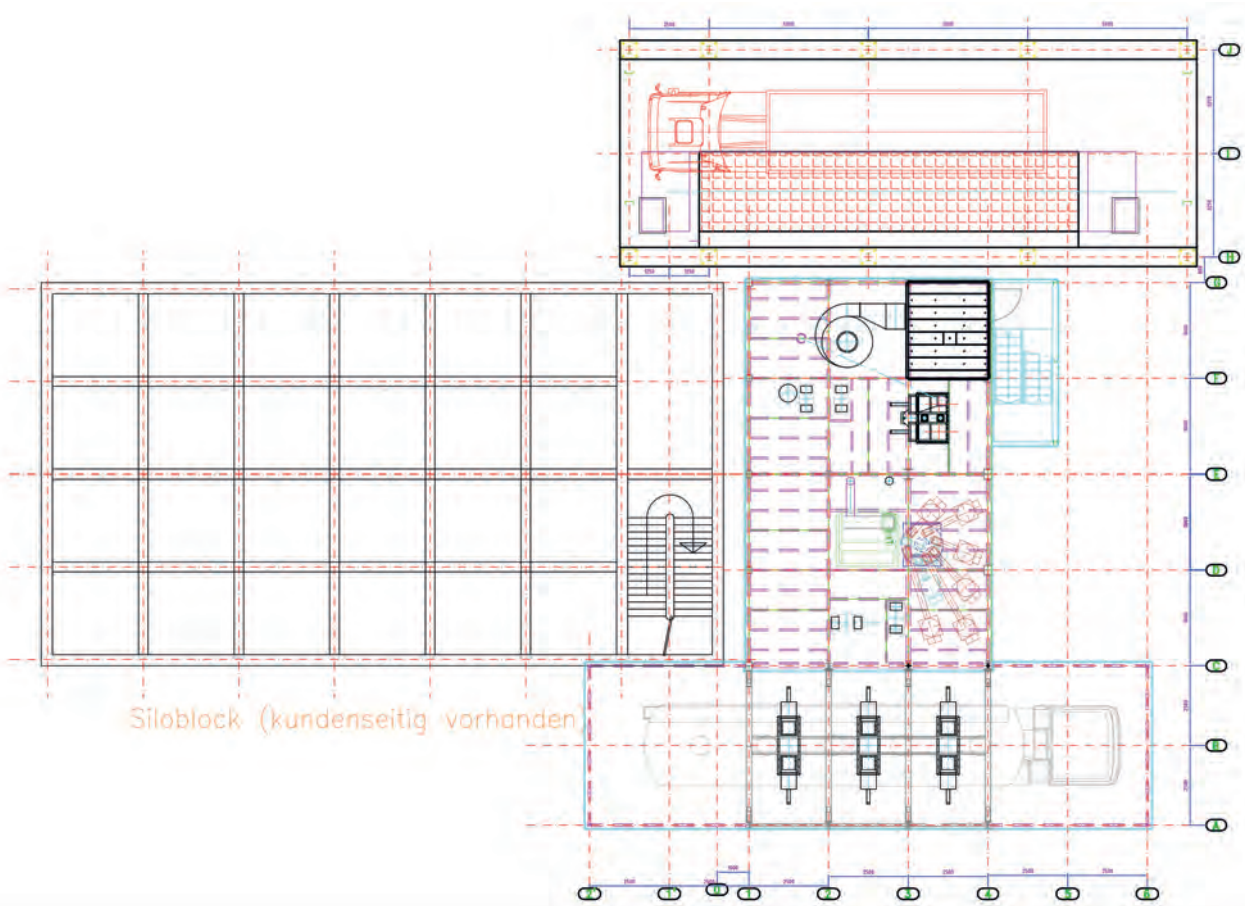
Feed Mill building with square silos for raw material and finished product,
Association "Turkmen-gallaonumleri" Mosul.



www.cesco-group.com

CESCO EPC GmbH
Byk-Gulden-Staße 2
D-78467 Konstanz
Germany
T. +49 7531 122860
info@cesco-group.com





Products

Silos

- Smooth Square Silos

Steel structures

- Solid Frames
- Machinery Towers
- Integrated Plant Building

Technical data

Type	Turnkey Plant
Country	Belorussia
City	Mozyr
Customer	OAO Mzyrer NPZ
Product	-
Storage capacity t	-
Silo type	-
Conveying capacity t/h	-
Milling capacity t/d	-
Year begin	2013
Year end	2015

Services

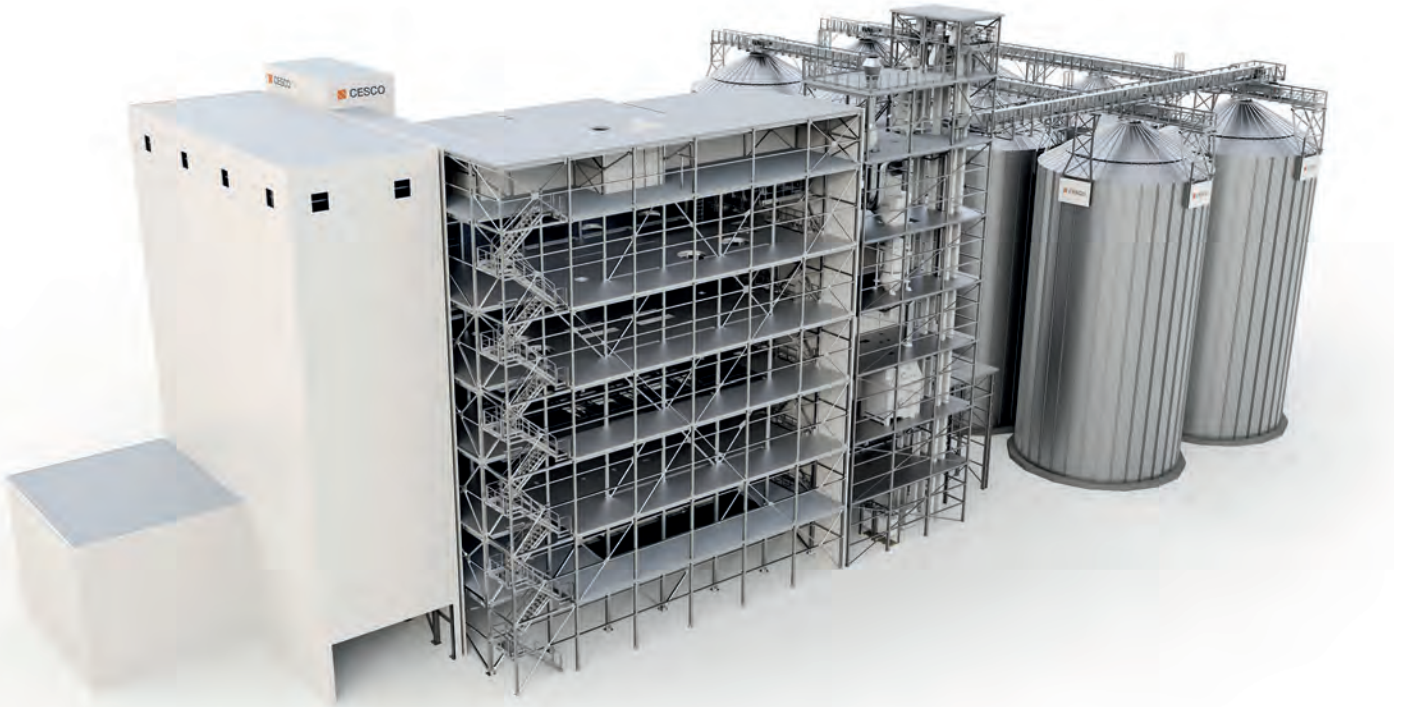
Basic and detail engineering and design of the general layout and flow-chart of the whole plant.

Design of architectural drawing for the civil works calculation and realization.

Steel structures design and static calculation.

Delivery and supervision of installation.

Commissioning.



Convex / SCTB Cameroon

Turnkey Plant

Product: Durum wheat, soft wheat; wheat flour, gluten, semolina

Storage capacity: 20.000 t



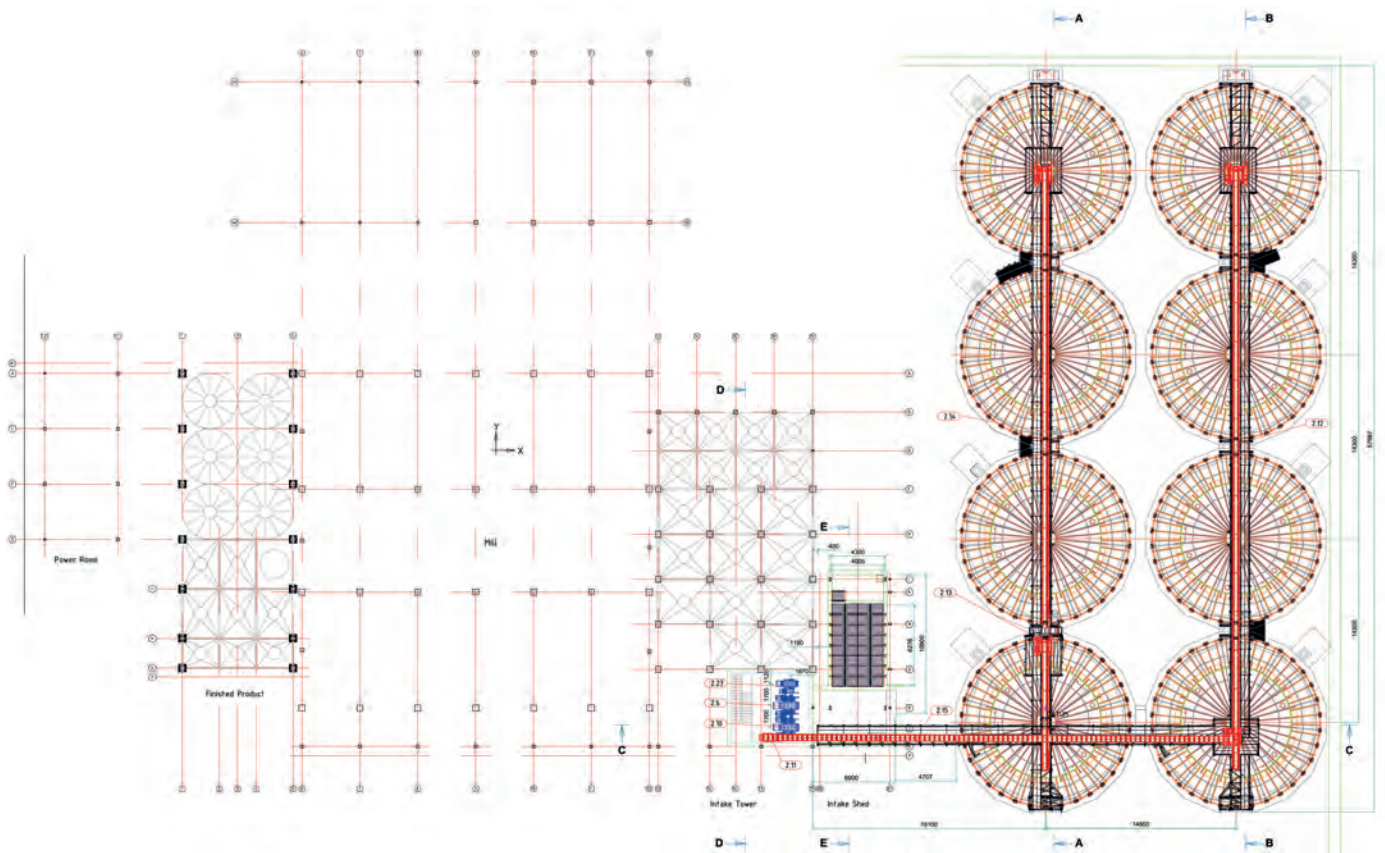
Mill building and silo plant, Convex / SCTB.



www.cesco-group.com

CESCO EPC GmbH
Byk-Gulden Straße 2
D-78467 Konstanz
Germany
T. +49 7531 122860
info@cesco-group.com





Products

Conveyors

- Truck Intake
- Intake Aspiration and Filter
- Chain Conveyors CC300, CC420
- Bucket Belt Elevators BBE280, BBE370

Silos

- Flat Bottom Silos FBS 13/21
- Smooth Square Silos
- Aeration System
- Sweep Augers

Process equipment

- Temperature Control System

Steel structures

- Conveyor Bridges
- Open/Closed Walkway
- Platforms and Ladders
- Machinery Towers
- Integrated Plant Building
- Solid frames

Technical data

Type	Turnkey Plant
Country	Cameroon
City	Douala
Customer	Convex / SCTB
Product	durum wheat, soft wheat, wheat flour, gluten, semolina
Storage capacity t	20.000
Silo type	Steel
Conveying capacity t/h	250
Milling capacity t/d	-
Year begin	2023
Year end	2025

Services

Basic and Detail Engineering and design of the general layout and flow-chart of the whole plant.

Design of architectural drawing for the civil works calculation and realization.

Steel structures design and static calculation.

Delivery and supervision of installation.

Electrical design, delivery and supervision of erection of the central control and automation cabinet and the on-site electrical material.

Commissioning.



Aarhus Omni Bulk A/S Denmark

Turnkey Plant
Product: Wooden Pellets
Storage capacity: 435 t



Truck loading system of wood pellet, Aarhus Omni Bulk A/S.



www.cesco-group.com

CESCO EPC GmbH
Byk-Gulden Straße 2
D-78467 Konstanz
Germany
T. +49 7531 122860
info@cesco-group.com



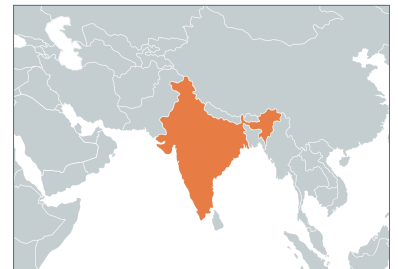


EBRO INDIA Pvt Ltd India

Turnkey Plant

Product: -

Storage capacity: 20.000 t



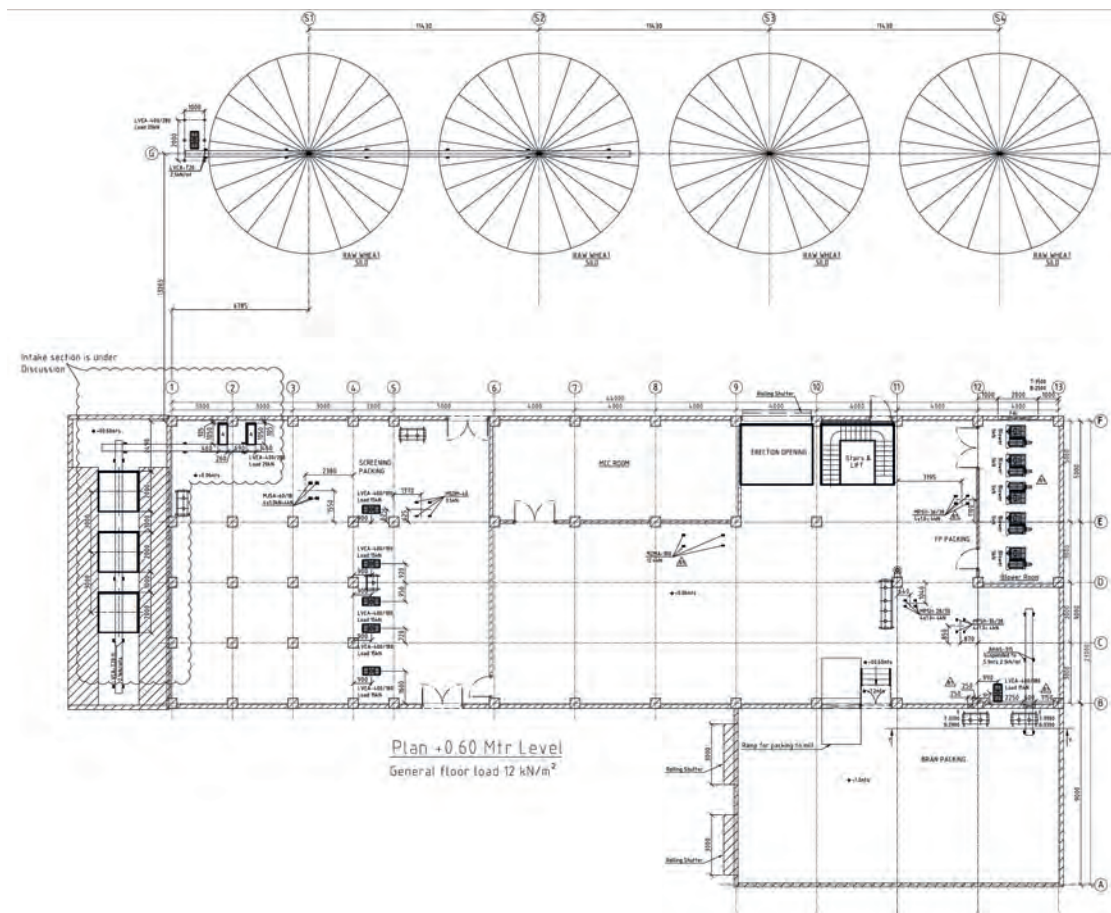
Rice Mill building with square silos for raw material and finished product, EBRO India.



CESCO EPC GmbH
Byk-Gulden Straße 2
D-78467 Konstanz
Germany
T. +49 7531 122860
info@cesco-group.com

www.cesco-group.com





Products

Silos

- Smooth Square Silos
- Buffer Bins

Steel structures

- Conveyor Bridges
- Open/Closed Walkway
- Platforms and Ladders
- Integrated Plant Building

Technical data

Type	Turnkey Plant
Country	India
City	Haryana
Customer	EBRO INDIA Pvt Ltd.
Product	-
Storage capacity t	-
Silo type	-
Conveying capacity t/h	-
Milling capacity t/d	-
Year begin	2019
Year end	2020

Services

Basic and detail engineering and design of the general layout and flow-chart of the whole plant.

Design of architectural drawing for the civil works calculation and realization.

Steel structures design and static calculation.

Delivery and supervision of installation.

Commissioning.



Moldova Semente Romania

Turnkey Plant
Product: -
Storage capacity: -



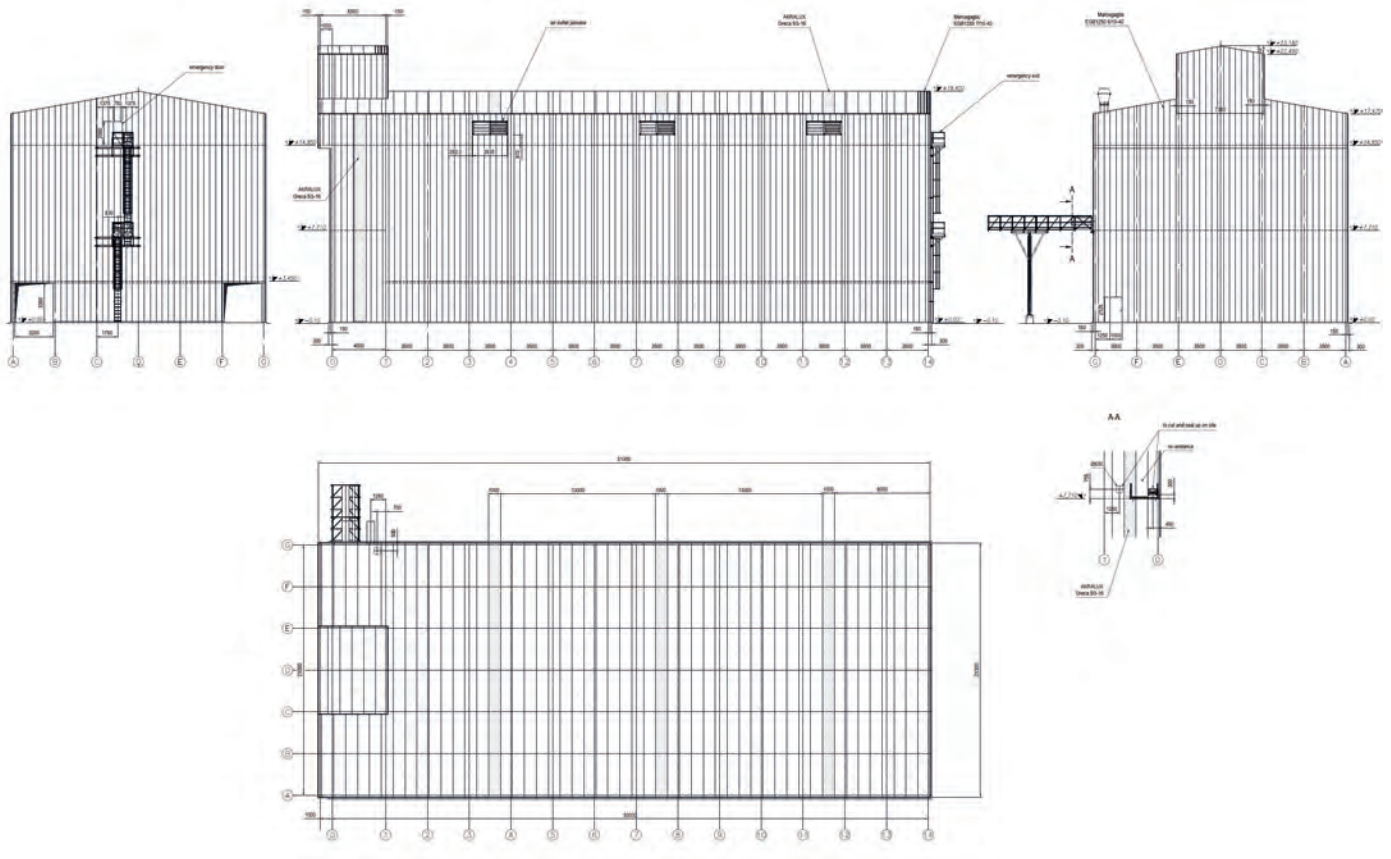
Corn cobs dryer & seed production with building and square silos for raw material and finished product



www.cesco-group.com

CESCO EPC GmbH
Byk-Gulden-Staße 2
D-78467 Konstanz
Germany
T. +49 7531 122860
info@cesco-group.com





Products

Silos

- Commissioning

Process equipment

- Dryer
- Temperature Control System

Steel structures

- Conveyor Bridges
- Open/Closed Walkway
- Platforms and Ladders
- Solid Frames
- Machinery Towers
- Shed
- Integrated Plant Building

Technical data

Type	Turnkey Plant
Country	Romania
City	-
Customer	Moldova Semente
Product	-
Storage capacity t	-
Silo type	-
Conveying capacity t/h	-
Milling capacity t/d	-
Year begin	2017
Year end	2018

Services

Basic and detail engineering and design of the general layout and flow-chart of the whole plant.

Design of architectural drawing for the civil works calculation and realization.

Steel structures design and static calculation.

Delivery and supervision of installation.

Electrical design, delivery and supervision of erection of the central control and automation cabinet and the on-site electrical material.

Commissioning.

Training.



Sigma

Russia

Turnkey Plant
 Product: -
 Storage capacity: -



Corn cobs dryer & seed production with building and square silos for raw material and finished product.



CESCO EPC GmbH
 Byk-Gulden-Staße 2
 D-78467 Konstanz
 Germany
 T. +49 7531 122860
 info@cesco-group.com

www.cesco-group.com





Products

Silos

- Commissioning

Process equipment

- Dryer
- Temperature Control System

Steel structures

- Conveyor Bridges
- Open/Closed Walkway
- Platforms and Ladders
- Solid frames
- Machinery Towers
- Shed
- Integrated Plant Building

Technical data

Type	Turnkey Plant
Country	Russia
City	-
Customer	Sigma
Product	-
Storage capacity t	-
Silo type	-
Conveying capacity t/h	-
Milling capacity t/d	-
Year begin	2018
Year end	2019

Services

Basic and detail engineering and design of the general layout and flow-chart of the whole plant.

Design of architectural drawing for the civil works calculation and realization.

Steel structures design and static calculation.

Delivery and supervision of installation.

Electrical design, delivery and supervision of erection of the central control and automation cabinet and the on-site electrical material.

Commissioning.

Training.



Bechey Serbia

Turnkey Plant
Product: -
Storage capacity: -



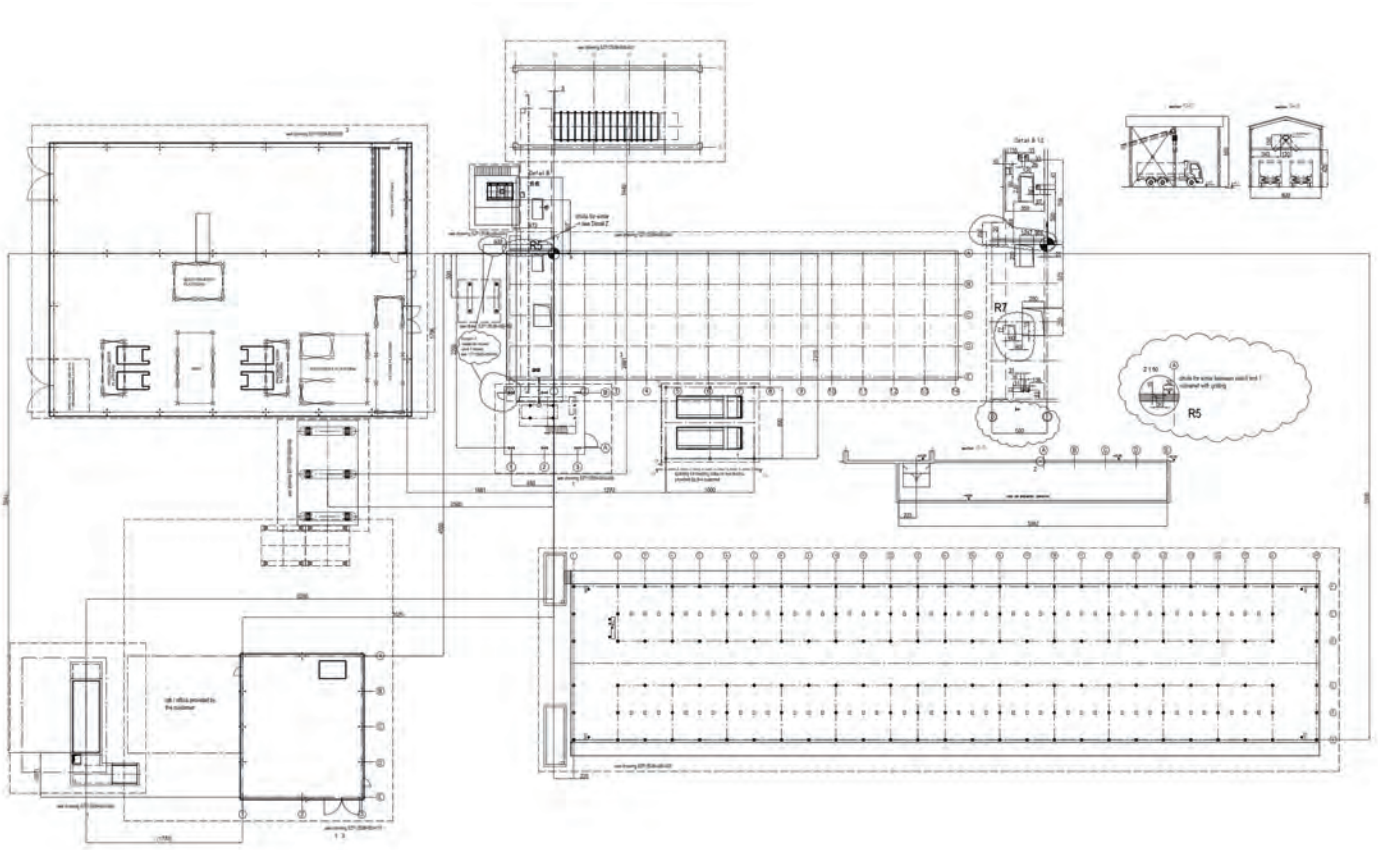
Corn cobs dryer & seed production with building and square silos for raw material and finished product.



CESCO EPC GmbH
Byk-Gulden Straße 2
D-78467 Konstanz
Germany
T. +49 7531 122860
info@cesco-group.com

www.cesco-group.com





Products

Silos

- Commissioning

Process equipment

- Dryer
- Temperature Control System

Steel structures

- Conveyor Bridges
- Open/Closed Walkway
- Platforms and Ladders
- Solid frames
- Machinery Towers
- Shed
- Integrated Plant Building

Technical data

Type	Turnkey Plant
Country	Serbia
City	-
Customer	Bechey
Product	-
Storage capacity t	-
Silo type	-
Conveying capacity t/h	-
Milling capacity t/d	-
Year begin	2015
Year end	2016

Services

Basic and Detail Engineering and design of the general layout and flow-chart of the whole plant.

Design of architectural drawing for the civil works calculation and realization.

Steel structures design and static calculation.

Delivery and supervision of installation.

Electrical design, delivery and supervision of erection of the central control and automation cabinet and the on-site electrical material.

Commissioning.

Training.



AFRY - ÅF – Industry AB / Lantmannen Sweden

Turnkey Plant
Product: Oat
Storage capacity: 1.220 t

Oat Mill building with round and square silos for raw material and finished product, AFRY - AF.



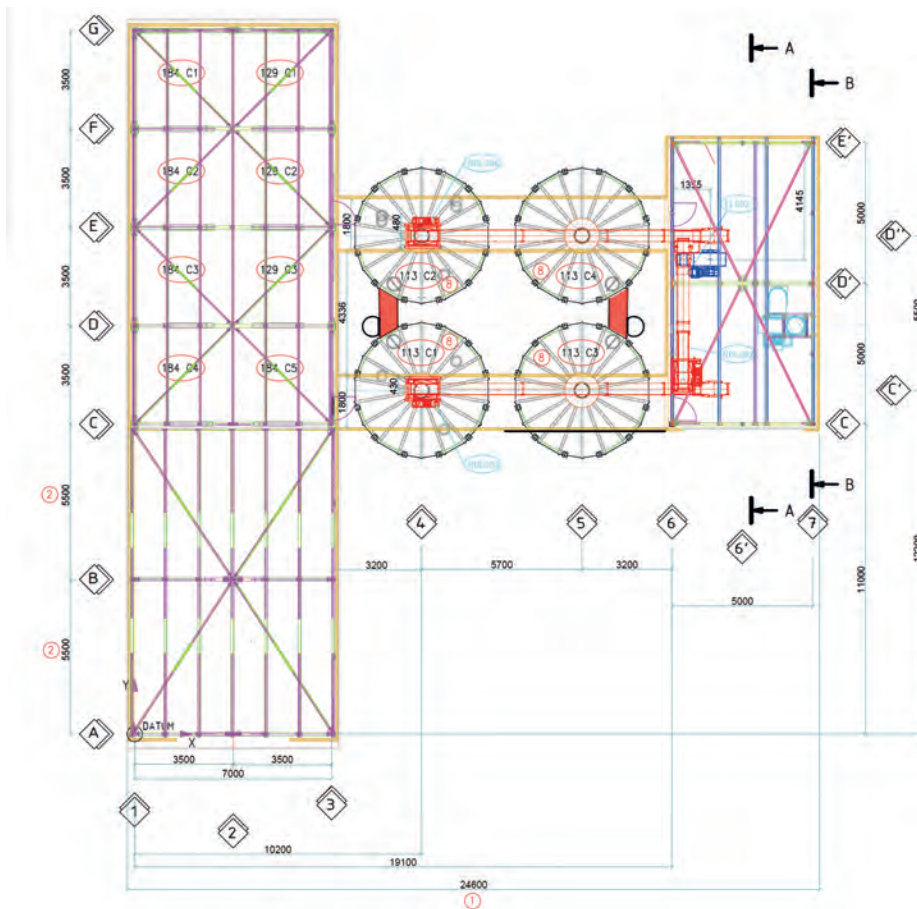
Project VIDEO



www.cesco-group.com

CESCO EPC GmbH
Byk-Gulden Straße 2
D-78467 Konstanz
Germany
T. +49 7531 122860
info@cesco-group.com





Products

Conveyors

- Truck Intake
- Intake Aspiration and Filter
- Chain Conveyors CC340
- Bucket Belt Elevators BBE330

Silos

- Hopper Bottom Silos HBS 4,60/14/451
- Corrugated Square Silos CSS 16-35-P
- Truck Outloading

Process equipment

- Cleaner
- Spot Filter SFHN-6
- Magnetic Separator MS

Steel structures

- Walkway
- Platforms and Ladders
- Entablatures
- Machinery Towers

Technical data

Type	Turnkey Plant
Country	Sweden
City	Kimstad
Customer	AFRY - ÅF - Industry AB / Lantmannen
Product	Oat
Storage capacity t	1.220
Silo type	Steel
Conveying capacity t/h	100
Milling capacity t/d	-
Year begin	2021
Year end	2022

Services

Basic and Detail Engineering and design of the general layout and flow-chart of the whole plant.

Design of architectural drawing for the civil works calculation and realization.

Steel structures design and static calculation.

Delivery and supervision of installation of the silo plant, conveyors and steel part related to the silo and conveyors.

Commissioning.

Training.



CESCO

www.cesco-group.com

Smart Concept, Easy Operation.