

CESCO chain conveyors are designed with flexible concept and modular design, for horizontal or slightly inclined conveying of cereals, meals, pellets, and granular products in general. They realise the completely closed conveying of the product, with capability to load and unload the product, even in reversible mode, in several points, with zero loss during the conveying, easy cleaning, maintenance, and safety during operation thanks the complete bolted system used.

They are designed with particular attention to the shape of the internal part of the casing, in order to limit the wear, extend the life of the machine and prevent deposit of product at the end of the conveying operation.

GENERAL CHARACTERISTICS

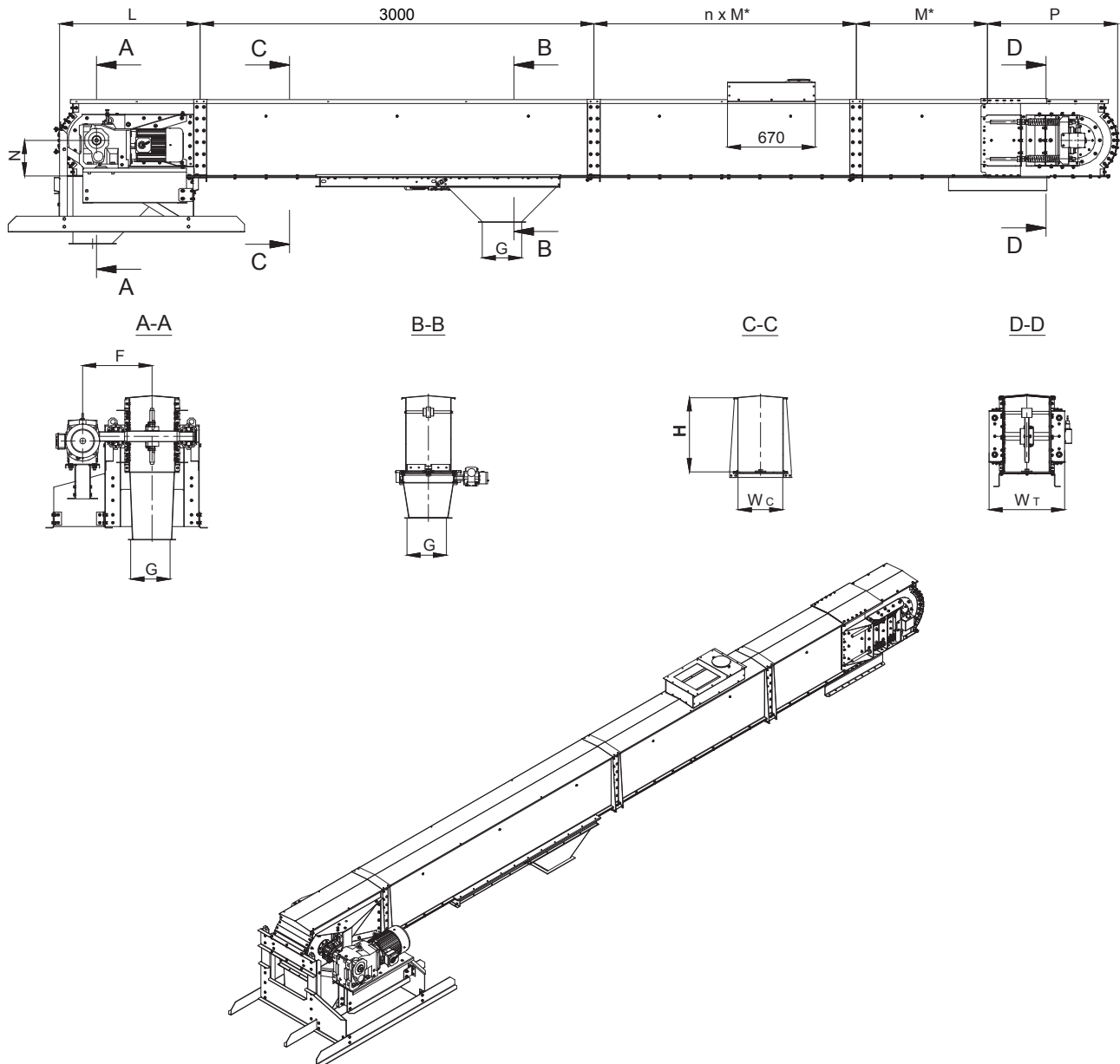
- Head and tail sections with rounded shape.
- Tail section equipped with screw chain adjustment and spring-loaded length and shock absorber.
- Chain sprocket bolted to the shaft and divided in 2 parts for easy maintenance.
- Chain flights equipped with UHMW-PE scrapers.
- Supports of both the drive and the tail shaft completely external allowing easy bearing maintenance.

Technical data

| Type | | CC 200 | CC 300 | CC 340 | CC 420 |
|---|----------|---|---------|---------|---------|
| Capacity (Bulk density 750 kg/m ³) | Nominal | 50 t/h | 100 t/h | 200 t/h | 250 t/h |
| | Maximal | 75 t/h | 150 t/h | 250 t/h | 300 t/h |
| Maximum lenght | Standard | 60 m | | | |
| | Optional | 80 m | | | |
| Drive unit | | Head section can be equipped with either a single gear motor or two gear motors operating in parallel, splined to the shaft | | | |
| Chain speed | | Up to 0.80 m/s | | | |
| Standard chain type (DIN8167) | | M56 | M112 | M160 | M160 |
| Sound pressure level | | up to 75 dB(A) | | | |
| Operating conditions | | -15°C to +60°C ambient | | | |

Materials

| | | |
|--|----------|---|
| Casing | Standard | Pre-galvanized steel S235 Z450 |
| | Optional | Pre-galvanized steel S235 Z600 Stainless steel AISI430 Food grade painted steel S235 |
| Wear resistant bottom lining | Standard | Hardox® 450 steel, 5 mm |
| Wear resistant side lining (2/3 Height) | Optional | Hardox® 450 steel, 4 mm |
| Chain | | Steel |
| Rollers on return | | Steel |
| Scraper flaps | | UHMW-PE, antistatic, 8 mm |
| Sensors | Standard | Overflow sensor Rotation control |
| | Optional | Bearing temperature sensor |
| ATEX | Standard | Zone 21 inside / ATEX free outside |
| | Optional | Zone 21 inside / Zone 22 outside |
| Optional accessories | | Outlet chute with UHMW-PE protection Inlet chute Intake pit lateral self-dosing inlet Dust aspiration pipe connection Connection flange for spot filter Electrical / pneumatic / manual slides Return buckets Drop forged chain Top inspection hatch Side inspection window Manual flow control flap Local service switch Supporting legs Double casing Reversible drive system |



| Type | F mm | G mm | H mm | L mm | N mm | P mm | W _C mm | W _T mm |
|--------|---------|---------|---------|---------|---------|---------|----------------------|----------------------|
| CC 200 | 270 | 200x200 | 325 | 782 | 140 | 992 | 185 | 400 |
| CC 300 | 510 | 250x250 | 443 | 952 | 185 | 1177 | 300 | 536 |
| CC 340 | 530 | 300x300 | 565 | 1072 | 270 | 1042 | 340 | 576 |
| CC 420 | 560 | 350x350 | 565 | 1072 | 270 | 1242 | 415 | 653 |

M* = The casing can be 500 mm, 1000 mm, 2000 mm or 3000 mm long

